

LEAK LOCK INSULATION CONTRACTING



COMPLETE ROOFING SOLUTIONS

DUBAI, U.A.E.

CONTACT: +971 52 488 8950 | +971 52 967 6127



VISION & MISSION STATEMENT

LEAK LOCK INSULATION CONTRACTING is a well Reputed Firm among contractors / clients and consultants. We provide its best Services to Clients and Believes on Long Term Business Relationship.

LEAK LOCK INSULATION CONTRACTING personals are also experienced in working in all kinds of industrial / mechanical Waterproofing fields, we have built up a very strong team of Professionals, Engineers, Site Supervisors and Craftsmen. These have worked together on various projects all over the country and have developed into a well-knit and coordinated technical force.

LEAK LOCK INSULATION CONTRACTING has also invested heavily in quality tools and equipment to allow its workforce to execute the jobs in the most professional manner. This has given us a decisive edge over the competition.

The shortage of quality workmanship at competitive rates is a very big problem nowadays. It was to address this scenario that Leak Lock Insulation Contracting was established. It was agreed right from day one that the driving force behind the company would be the desire to demonstrate and promote good engineering practices and sound professional services in the relevant fields.

The company aimed to set an example for others to follow, to be a benchmark by which others would be judged. As a result, Radiya General Maint. Cont. is manned today by a highly qualified and experienced team of professionals. All persons working for Radiya General have been exposed to a diversity of industrial environments and as such are well conversant with international standards and codes of practice.

LEAK LOCK INSULATION CONTRACTING has been established for providing state of the art solutions for Professional, Industrial & Domestic Needs. We focus on your satisfaction and requirements according to the problem at hand.

We are just a phone call away.

"You name it and consider it Executed".



LIST OF TOOLS & MACHINERY

1.	PU Spray Machine (Single Component)	1 No.
2.	PU Spray Machine (Double Component)	1 No.
3.	Shuttering <ul style="list-style-type: none"> • Steel Plates Sizes 2'x4' & different size • Wooden Planks complete 	2800 Sq.ft. 9200 Sq.ft.
4.	Wooden Supports (All sizes)	2150 Nos.
5.	Steel Girders	25 Nos.
6.	Scaffolding Pipes (8', 10', 12' & 20' long)	424 Nos.
7.	Joints	1500 Nos.
8.	Mixer Machine (1-Bag)	2 Nos.
9.	Mixer Machine (1/2 Bag)	3 Nos.
10.	Vibrator: - <ul style="list-style-type: none"> • Mechanical • Electrical 	2 Nos. 2 Nos.
11.	Level with Tripod (Complete)	2 Nos.
12.	Generator Set (15 kVA)	1 No.
13.	Water Pump and Engines (Different Capacity)	5 Nos.
14.	Welding Plant & Kits	3 Nos.
15.	Steel Cutter	2 Nos.
16.	Grinder	4 Nos.

Note: Additional tools, equipment and machinery etc. is arranged as per requirement of the project.

ROOFING **JOB PROJECTS**

Al Rawabi Dairy Co. *Dubai 6,000m² (Metal Roof Waterproofing)*



ROOFING **JOB PROJECTS**

Al Khattal Real Estate *Dubai 9,900 m² (2 x Warehouses)*



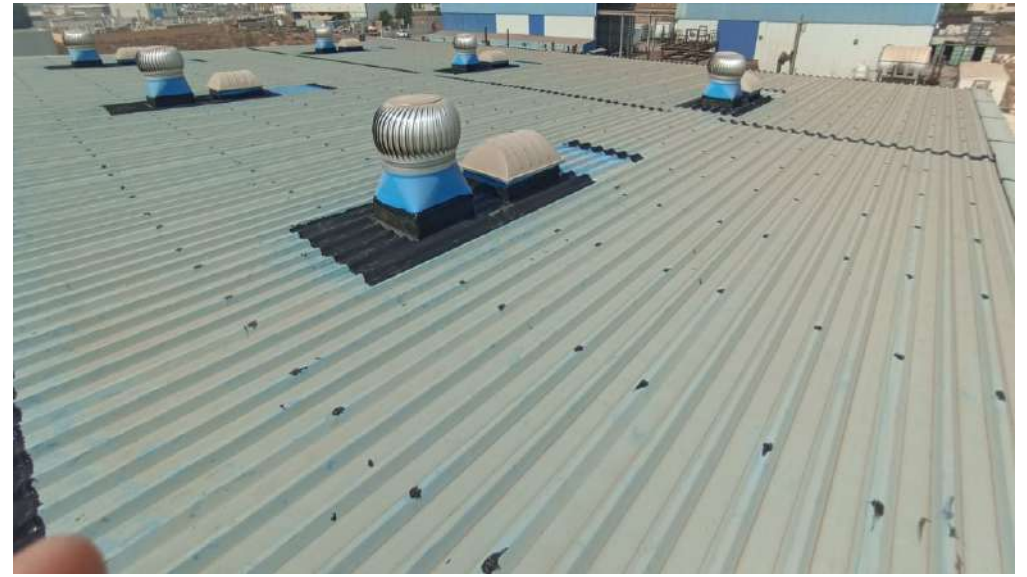
ROOFING **JOB PROJECTS**

Darwish Bin Ahmed & Sons *Abu Dhabi (Gutter Waterproofing - 300lm)*



ROOFING **JOB PROJECTS**

Navitas Chemicals FZE Sharjah 1,000 m² (Roof Waterproofing)



ROOFING **JOB PROJECTS**

Bin Shabib Contracting *Dubai (Metal Roof Waterproofing) - 1,000m²*



ROOFING **JOB PROJECTS**

Muhammad Bin Rashid Space Centre *Dubai (Metal Roof Waterproofing) - 1,080m²*



ROOFING **JOB PROJECTS**

AFSGT Dubai, 5,000 m² (Metal Roof Waterproofing)



PERGOLA **JOB PROJECTS**

Darwish Bin Ahmed & Sons *Dubai (Villa Roof Waterproofing)*



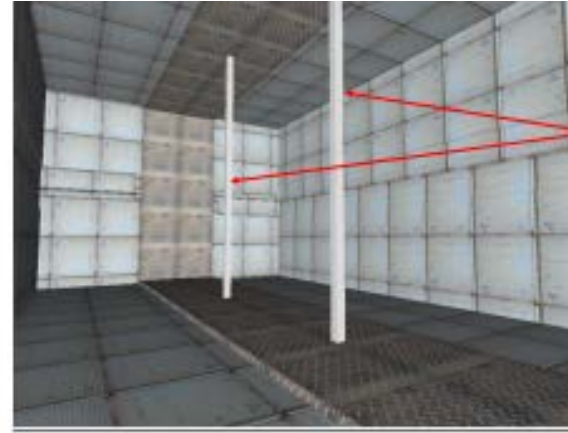
ROOFING **JOB PROJECTS**

Ittehad Paper Mills Abu Dhabi (Ventilators Waterproofing)

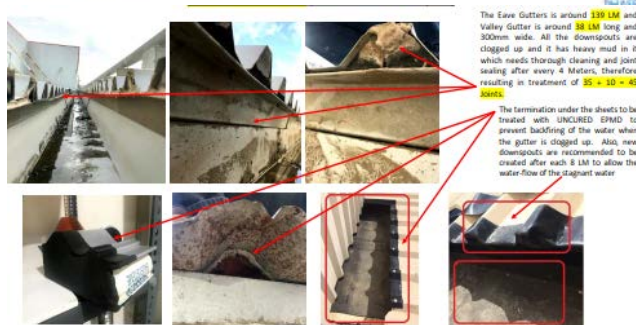
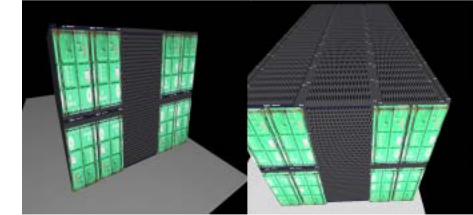


Leak Lock Cont. **Engineering Consultancy Services**

Detailed Site Survey Reports with Measurements using Satellite Imaging Software's with Problem Identifications & Solutions as well as Consulting Services



Both Frame Beams will be cut from the Middle and middle will be supported with 2 Nos. of 100x100mm x 2 sides support columns



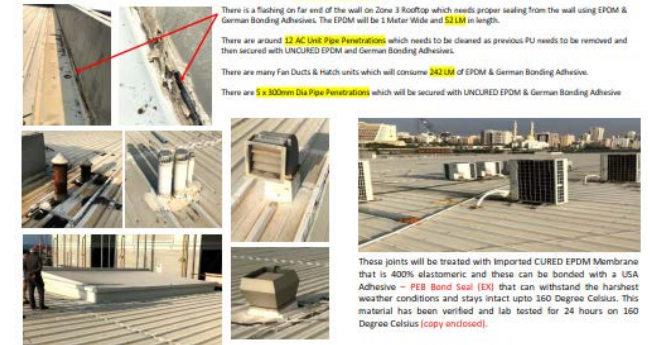
The Eave Gutters is around 130 LM and Valley Gutter is around 38 LM long and 300mm wide. All the downsouts are chipped up and it has heavy mud in it which needs thorough cleaning and joint sealing after every 4 Meters, therefore resulting in treatment of 85 x 30 = 45 joints.

The termination under the sheets to be treated with UNCURED EPDM to prevent backing of the water when the gutter is chipped up. Also, new downsouts are recommended to be created after each 8 LM to allow the water flow of the diagonal water.



The UNCURED EPDM is a special product being used to prevent backing of the water from the sheet terminations and gaps. This is being sealed properly at the joint terminations using the German Bonding Adhesives.

These joints will be treated with Imported UNCURED EPDM Membrane that is 400% elastomeric and these can be bonded with a German Adhesive - PEB Bond Seal (EX) that can withstand the harshest weather conditions and stays intact upto 160 Degree Celsius. This material has been verified and lab tested for 24 hours on 160 Degree Celsius (copy enclosed).



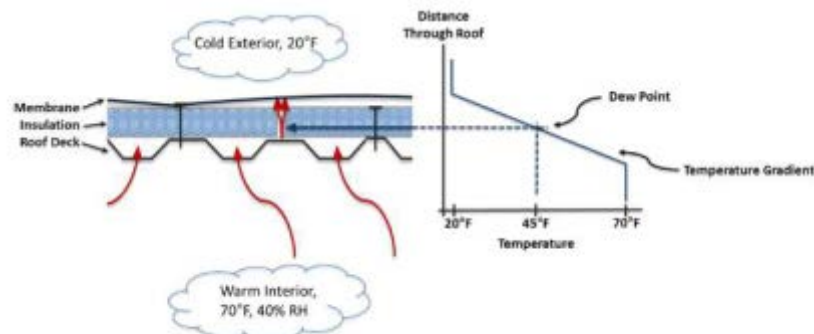
There is a flashing on far end of the wall on Zone 3 Rooftop which needs proper sealing from the wall using EPDM & German Bonding Adhesives. The EPDM will be 1 Meter Wide and 50 LM in length.

There are around 12 AC Unit Pipe Penetrations which needs to be cleaned as previous PU needs to be removed and then secured with UNCURED EPDM and German Bonding Adhesives.

There are many Fan Ducts & Hatch units which will consume 242 LM of EPDM & German Bonding Adhesives.

There are 5 x 300mm Dia Pipe Penetrations which will be secured with UNCURED EPDM & German Bonding Adhesive.

Those joints will be treated with Imported CURED EPDM Membrane that is 400% elastomeric and these can be bonded with a USA Adhesive - PEB Bond Seal (EX) that can withstand the harshest weather conditions and stays intact upto 160 Degree Celsius. This material has been verified and lab tested for 24 hours on 160 Degree Celsius (copy enclosed).



Condensation Problem in normal days due to constant temperature change

Condensation, Dew Point, and Roofing

Except in extremely arid climates, there is always some amount of water vapor in the air around us. When that air comes into contact with a cold surface, that water vapor condenses as a liquid onto the surface. A good example of this is the water droplets on the side of the glass of ice water. Those droplets are commonly known as "condensation" and are what results when the air gets too cold to hold the water vapor that is in it. Even when a cold surface is not available, if the air temperature suddenly drops, water vapor condenses out as mist or fog. Air can only hold so much water - more at higher temperatures and less at colder temperatures.



Leak Lock Cont. **Engineering Consultancy Services**

Detailed Site Survey Reports with Measurements using Satellite Imaging Software's with Problem Identifications & Solutions as well as Consulting Services



This roof has 2 x Eave Gutters on the Larger side

Gutter Size = 26 LM and 300mm wide x 2 Nos.

Downspouts needs thinner Drain Covers to prevent large amount of garbage to go in.



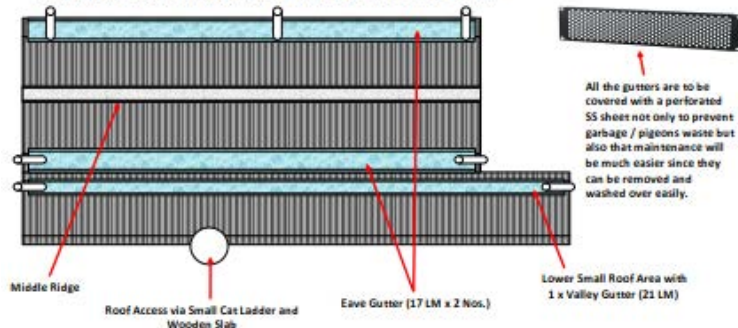
This roof has a Small Valley Gutter and an Eave Gutter at the far end of the roof and 1 downspout in each gutter. The gutter length is around 4.46 Meters. However, there is too much Bird Waste on the roof and in the gutters resulting in complete clogging of the drains and water then penetrates from the sheet terminations underneath the sheet and the gutter. Heavy Maintenance is required of this area as well as to replace the gutters since these are also rusted.



FLOUR PACKING (LOWER ROOF) – LARGE ROOF

TOP PERSPECTIVE ILLUSTRATION DIAGRAM OF THE GUTTERS & THEIR LENGTHS

Total Gutter Lengths: (Flour Packing (Lower Roof)) = 17 + 17 + 21 LM = 55 LM Total Length



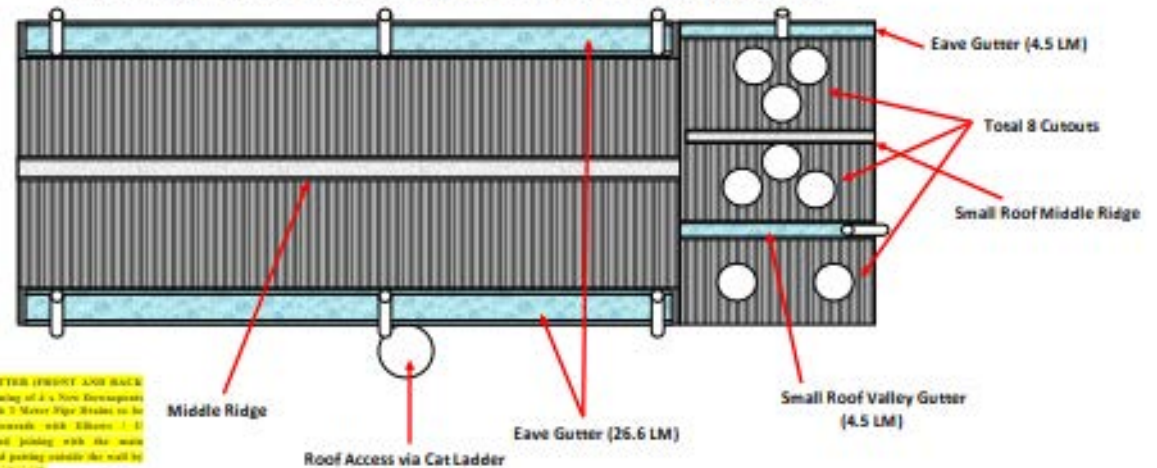
All the gutters are to be covered with a perforated SS sheet not only to prevent garbage / pigeons waste but also that maintenance will be much easier since they can be removed and washed over easily.

Gutter Replacement + Sealing from the Joints for all the Eave Gutters required. However, New Core Cuts are recommended for water overflow = 7 Overflow Core Cutting to be done.

FLOUR PACKING (UPPER ROOF) – SMALL ROOF

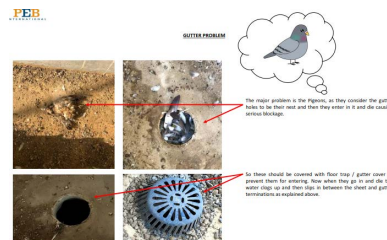
TOP PERSPECTIVE ILLUSTRATION DIAGRAM OF THE GUTTERS & THEIR LENGTHS

Total Gutter Lengths: (Flour Packing (Upper Roof)) = 26.6 + 26.6 + 4.5 + 4.5 LM = 62.2 LM Total Length



EAVE GUTTERS (FRONT AND BACK)
100% Fencing of 4 x 4mm Galvanneal 4" Dia with 2 Meter Pipe Straps to the Roof downwards with 2 Clamps and joining with the main gutter and pointing outside the wall to prevent water leakage.

Gutter Replacement + Sealing from the Joints as well as New Core Cuts are recommended for water overflow for all the gutters new core cut to be given as shown above = 8 Overflow Core Cutting to be done.



The major problem is the Pigeons, so they consider the gutter as their nest and they lay their eggs in it and the young Pigeons are hatched there.

The sheet should be covered with their 100% gutter cover to prevent them from entering, show when they go in and do the water stop up and then they enter in it and the young Pigeons are hatched there.

Sr. No.	Area	Scope of Work	Qty / LM	Treatment Details
1	Flour Packing Upper Roof	New Downspouts 4" Dia	4 Nos.	New Downspouts with PVC 4" Drain Pipes to be created 8 Meter apart from each other and then brought down and then taken out with Elbow and core cut from the wall and fixed alongside the wall from top to bottom 25 LM high by using U Clamps and accessories (Boom LM)
2	Flour Packing Lower Roof	Overflow Core Cuts 4" Dia	8 Nos.	4" Dia Core Cutting to be done fixed with PVC Pipe in the wall gap and waterproofed with Uncured EPDM and German Bonding Adhesive for proper sealing to be created 8 Meter apart from each other. (Boom LM)
3	Flour Packing Lower Roof	Gutter Joint Treatment	21 Joints	For total length of 63 LM of all the Eave & Valley Gutters the joints will be treated with EPDM & German Bonding Adhesive to prevent water leakage.
4	Flour Packing Lower Roof	Gutter Water Backflow Treatment	67 LM	The total length of 67 LM of all the Eave Gutters + 4 LM Extra for the other side of the Valley Gutter to be treated with UNCURED EPDM and German Bonding Adhesive to prevent Water Backflow from the terminations under the sheets and the gutter.

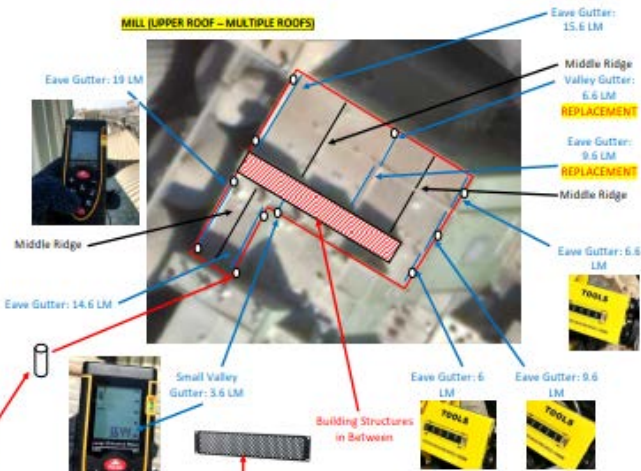
This has multiple Gutters & Middle Ridges. Its difficult to explain this roof, The area marked within the red line is the roof areas. The Area marked with white background and red lines are building structures in the middle. However, it is explained in detail in the best possible way.

Gutters are marked with **BLUE** Lines

Middle Ridges are marked with **BLACK** Lines

11 X Core Cuts required

MILL (UPPER ROOF – MULTIPLE ROOFS)



All the gutters are to be covered with a perforated SS sheet not only to prevent garbage / pigeons waste but also that maintenance will be much easier since they can be removed and washed over easily.

METAL ROOF WATER PROOFING SOLUTIONS

Robust Waterproofing Solutions *For Skylights, Exhaust Fans, Ducts, Chimneys, Gutters and Penetrations*



Metal Roof Waterproofing

- ✔ Quality Work
- ✔ Professional Staff
- ✔ 24/7 Support
- ✔ Cost Effective





+971 52 967 6127
+971 52 488 8950



SKYLIGHTS WATERPROOFING





+971 52 488 8950
+971 52 967 6127



www.leaklockuae.com



info@leaklockuae.com




ROOF GUTTER WATERPROOFING






BOOK US


- +971 52 488 8950
- +971 52 967 6127
- info@leaklockuae.com
- www.leaklockuae.com



Chimney Waterproofing

- ✔ Quality Work
- ✔ Professional Staff
- ✔ 24/7 Support
- ✔ Cost Effective





+971 52 967 6127
+971 52 488 8950



Roof Skylights Waterproofing

- ✔ Quality Work
- ✔ Professional Staff
- ✔ 24/7 Support
- ✔ Cost Effective







+971 52 967 6127
+971 52 488 8950



LEAK LOCK INSULATION CONTRACTING
OFFICE M02, AL SHARIF STARS 2 BUILDING,
NAIF, DEIRA, DUBAI, UAE

 971 52 488 8950
 971 52 967 6127
info@leaklockuae.com