

# LEAK LOCK INSULATION CONTRACTING LLC

## CAMPANY PROFILE



**+971 52 967 6127**  
**+971 52 488 8950**



**<https://leaklockuae.com/>**



**[info@leaklockuae.com](mailto:info@leaklockuae.com)**



**OFFICE F31, COMMERCIAL-5 BUILDING PLOT  
NO. 176-0 - SAIH SHUAIB 2 - DUBAI  
INDUSTRIAL CITY - DUBAI - UNITED ARAB  
EMIRATES**

# Content

- About Us
- Vision
- Mission
- Services
- Projects
- Company Documents
- Gallery
- Clients



# About Us

Leak Lock Insulation Contracting LLC is a UAE based company delivering specialized metal roof waterproofing and metal fabrication solutions for commercial and industrial projects. We focus on protecting buildings, extending asset life, and reducing maintenance risks through technically sound and reliable workmanship.

Our core expertise includes roof waterproofing systems for metal and concrete roofs, insulation works, roof repairs, leak rectification, and preventive maintenance solutions designed for harsh climatic conditions. We also provide custom metal fabrication, structural steel works, sheet metal works, gutters, skylights, and related installation services executed with precision and safety compliance.

We work with proven materials, skilled manpower, and disciplined project execution to ensure durable results, operational safety, and long-term performance. Our approach is practical, detail driven, and aligned with client requirements, site conditions, and industry standards across the UAE.

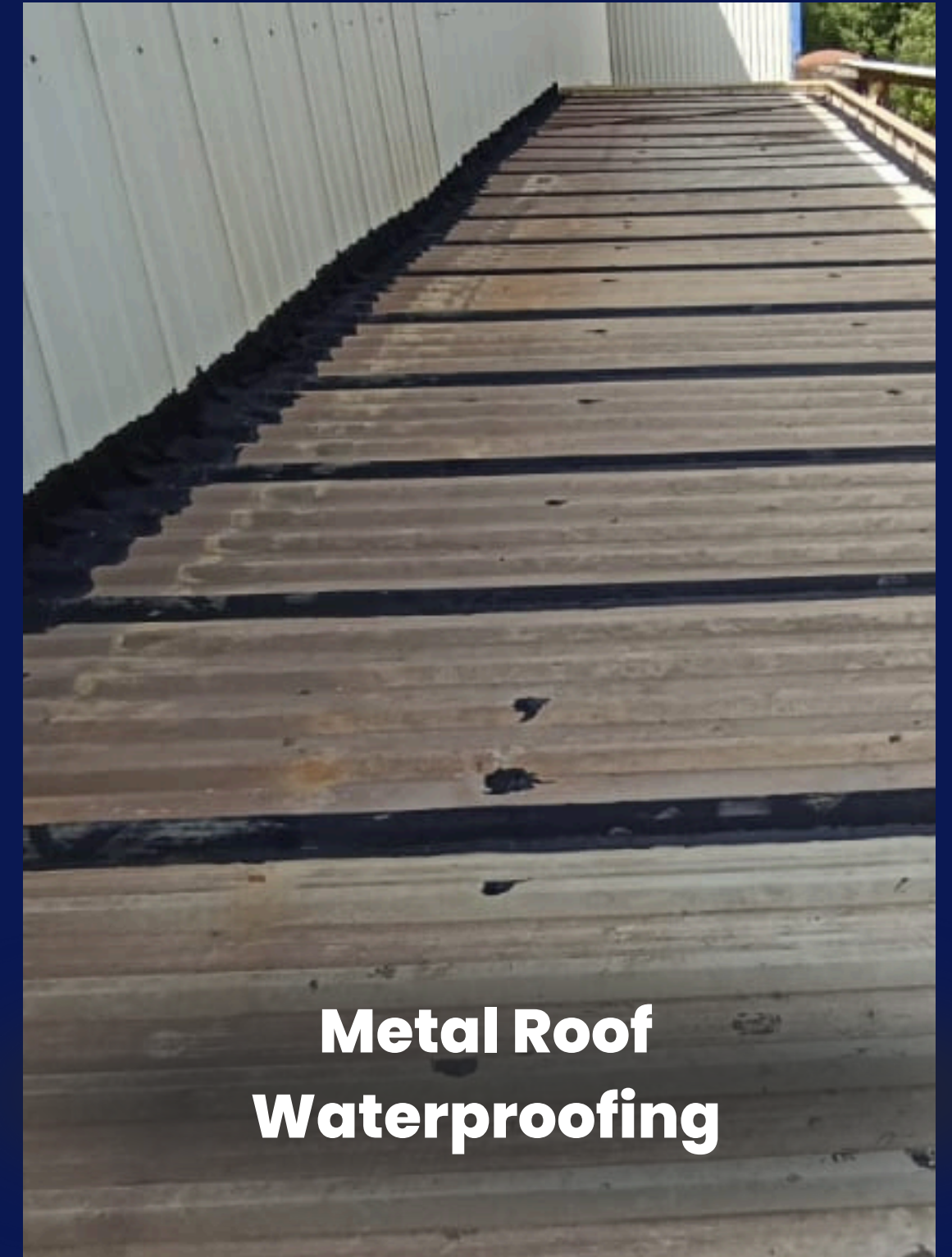
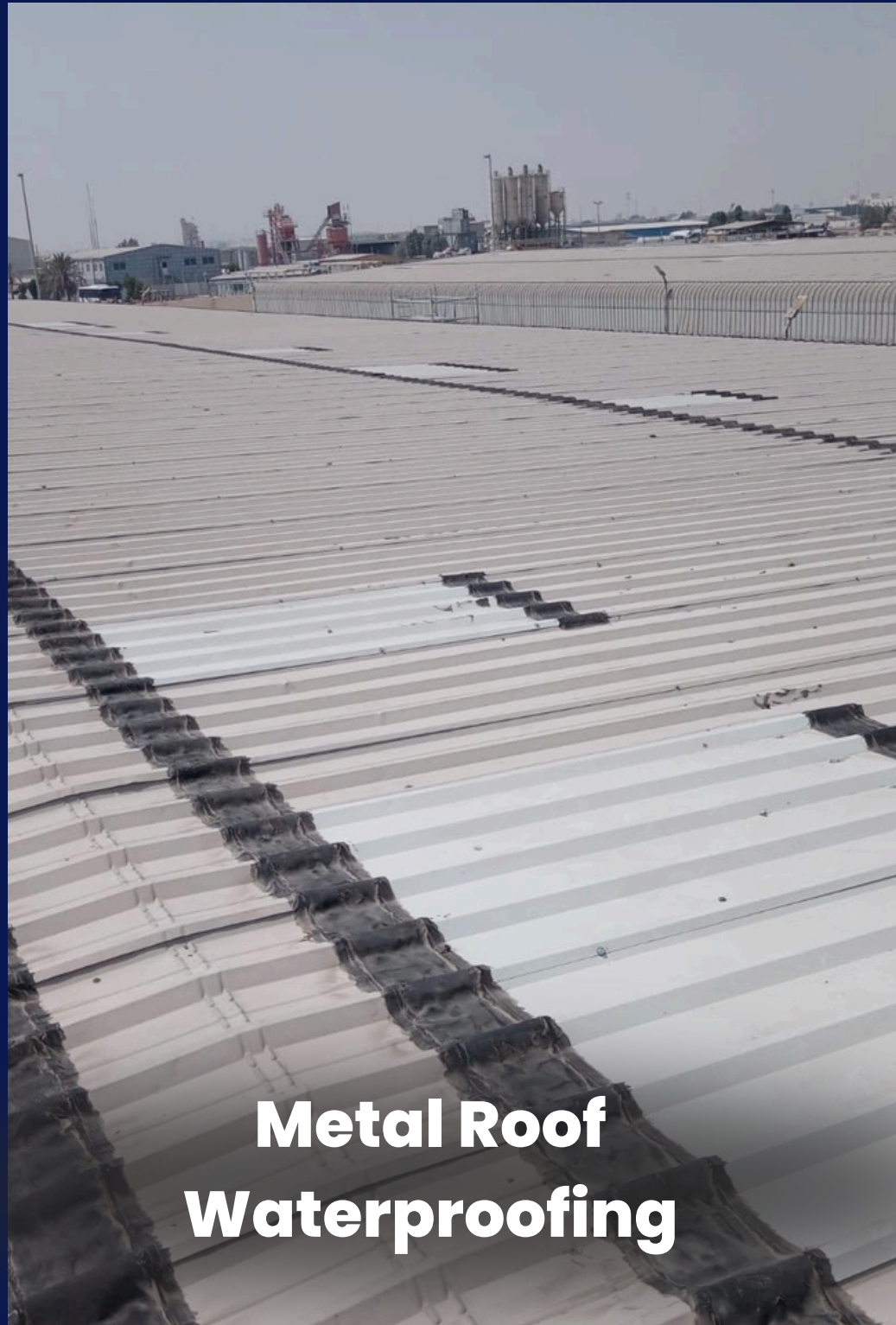
# Vision

"Protecting assets. Powering industries.  
Building reliable structures".

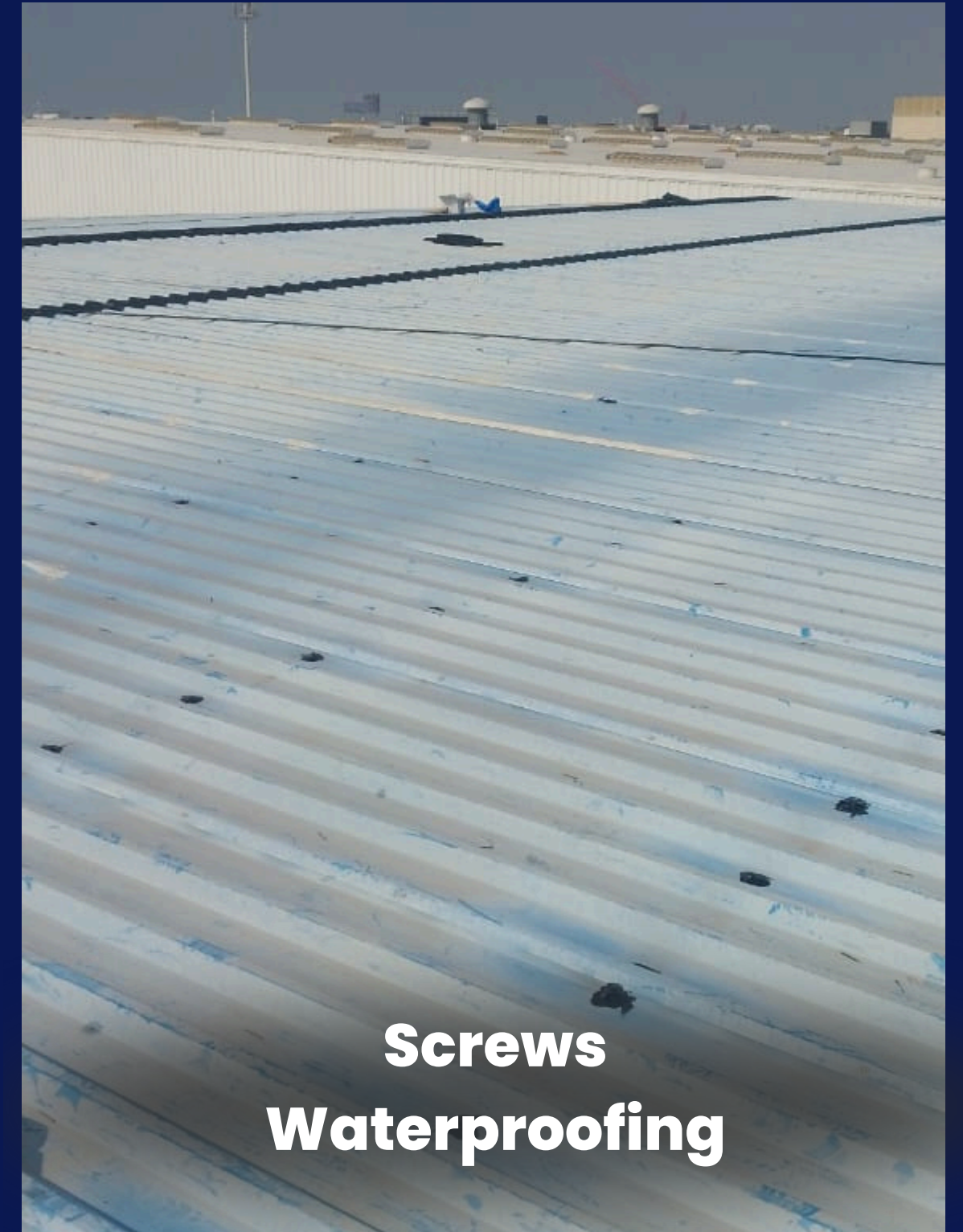
# Mission

Our mission is to safeguard client assets through guaranteed waterproofing, energy-efficient lighting, and reliable structural solutions, executed with technical rigor, quality workmanship, and the highest safety standards.

# Roof Waterproofing Services



# Roof Waterproofing Services



# Metal Roof Waterproofing



Waterproofing of Flashing



Waterproofing of Sheet Joint



Waterproofing of Center  
Ridge

# Waterproofing of Ventilation fan



# Concrete Roof Waterproofing



# Skylight Waterproofing



# Metal Roof Waterproofing



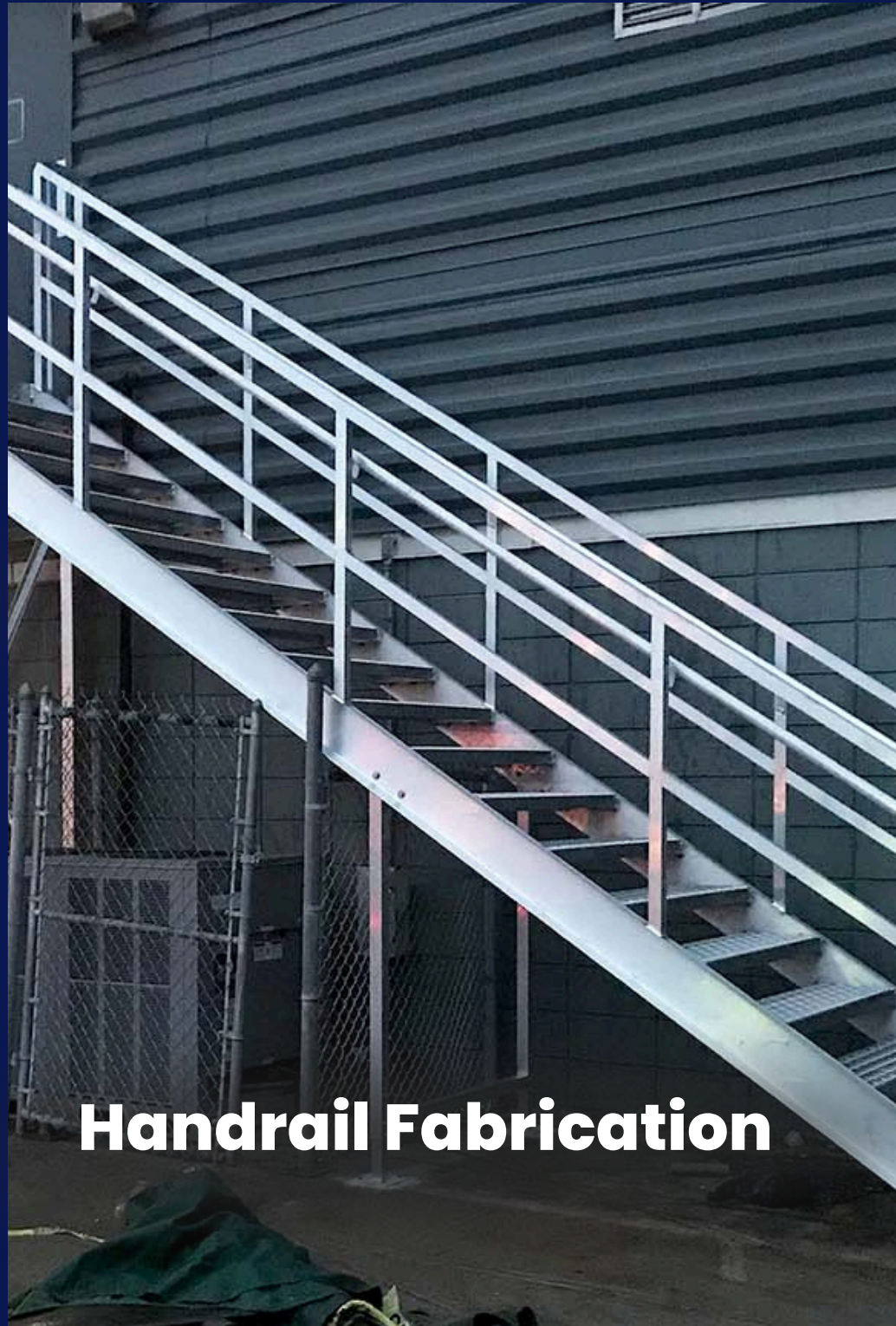


# FABRICATION SERVICES

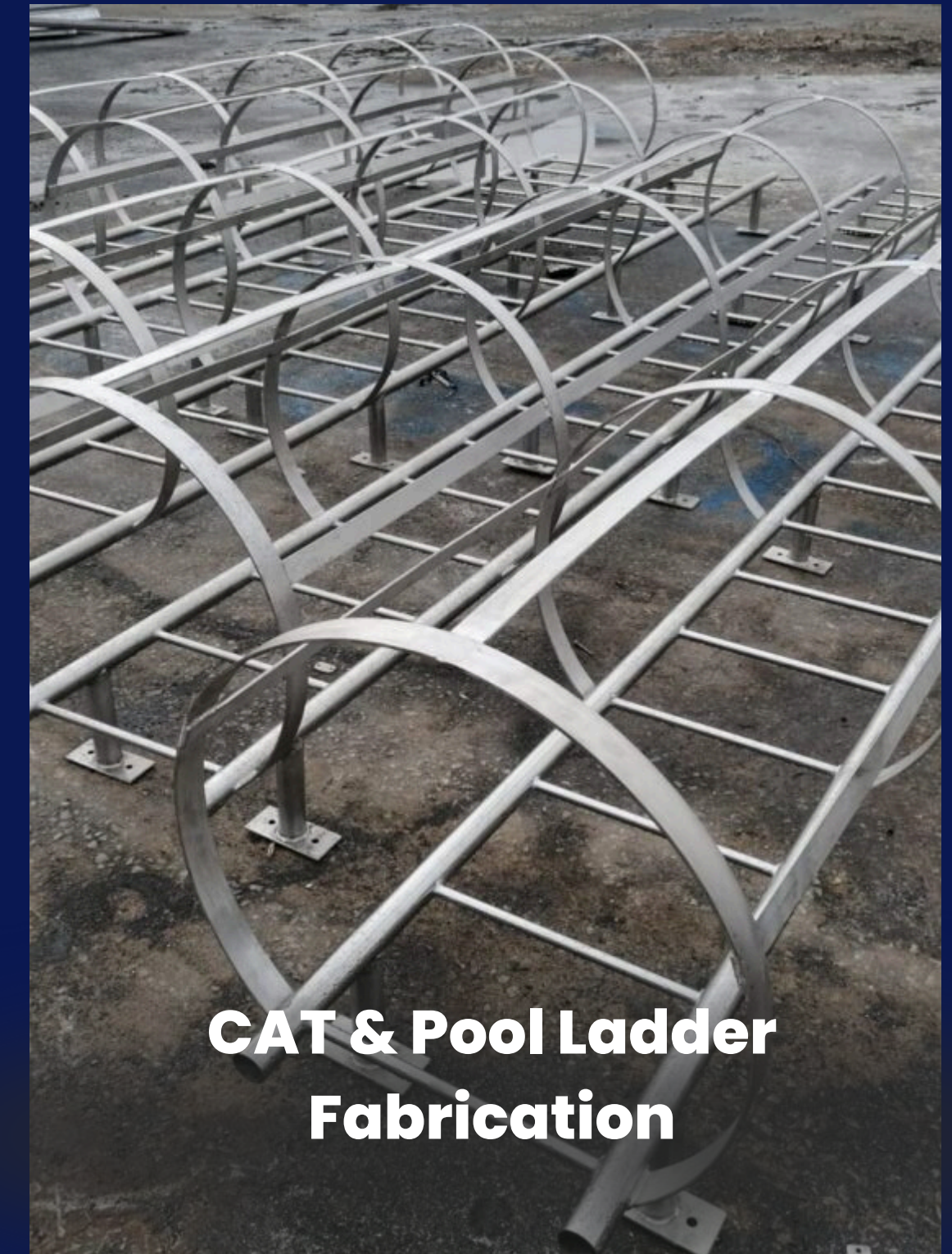
# Fabrication Services



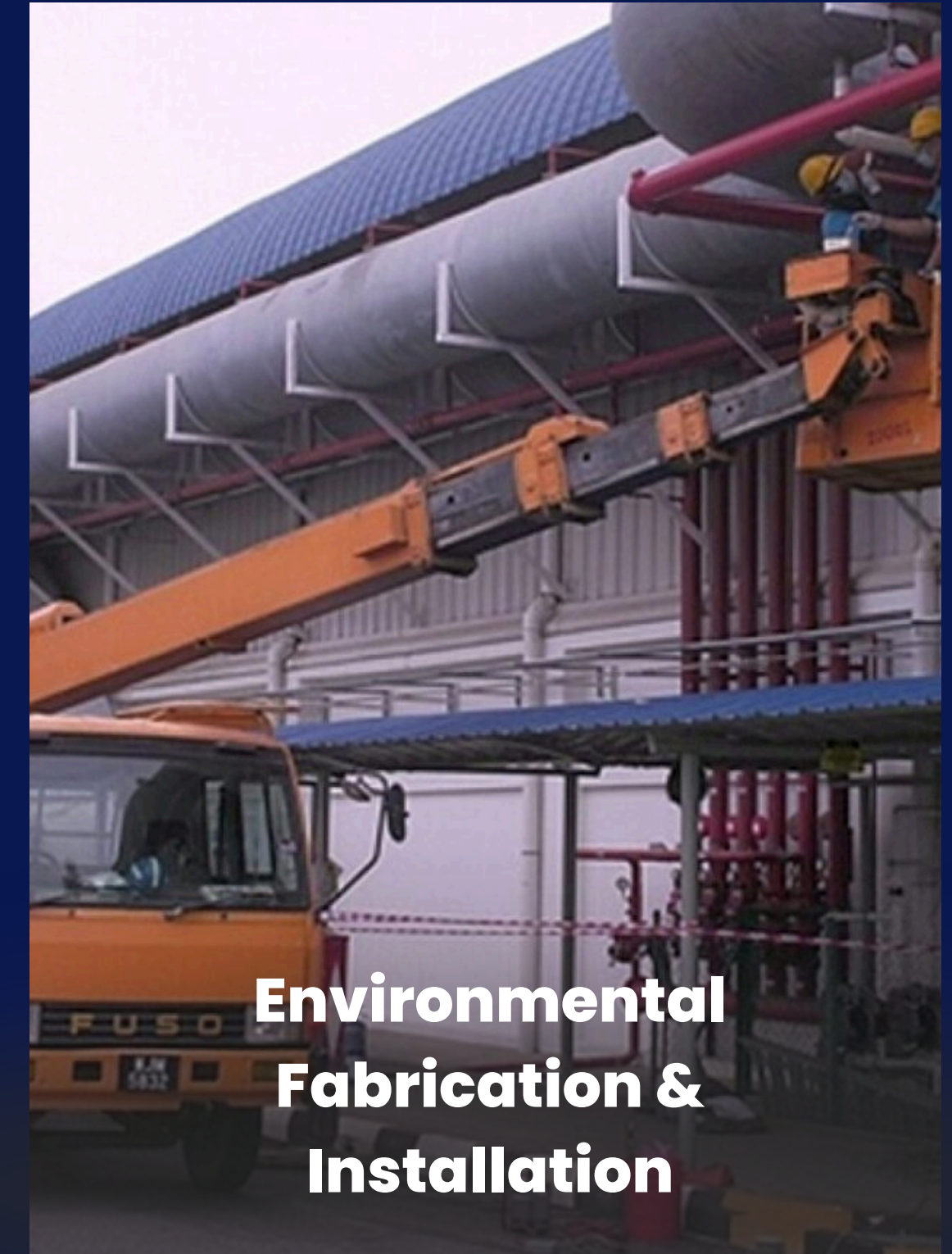
# Fabrication Services



# Fabrication Services



# Fabrication Services



The background is an aerial photograph of a city skyline, likely Dubai, with numerous skyscrapers. A semi-transparent blue filter is applied over the entire image. Four decorative yellow wavy lines are positioned in the corners, framing the central text box. The text 'PROJECTS DETAIL' is centered within a yellow rectangular box with a thin white border.

# PROJECTS DETAIL

# Leak Lock UAE Waterproofing Projects

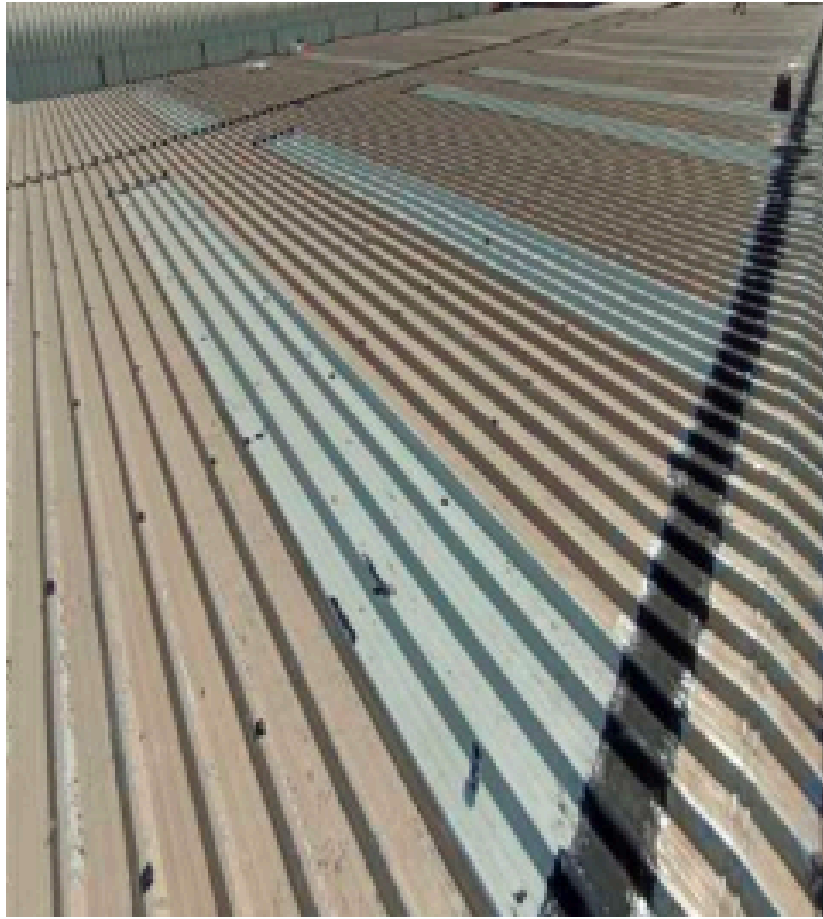
Leak Lock Insulation Contracting has successfully completed numerous projects across the UAE, including roof waterproofing, thermal insulation, and metal fabrication works, serving commercial buildings, warehouses, and industrial complexes with exceptional precision and quality.

Each project reflects our dedication to durability, sustainability, and client satisfaction. From residential waterproofing to large-scale industrial insulation, Leak Lock UAE continues to set benchmarks in performance, reliability, and long-term structural protection.



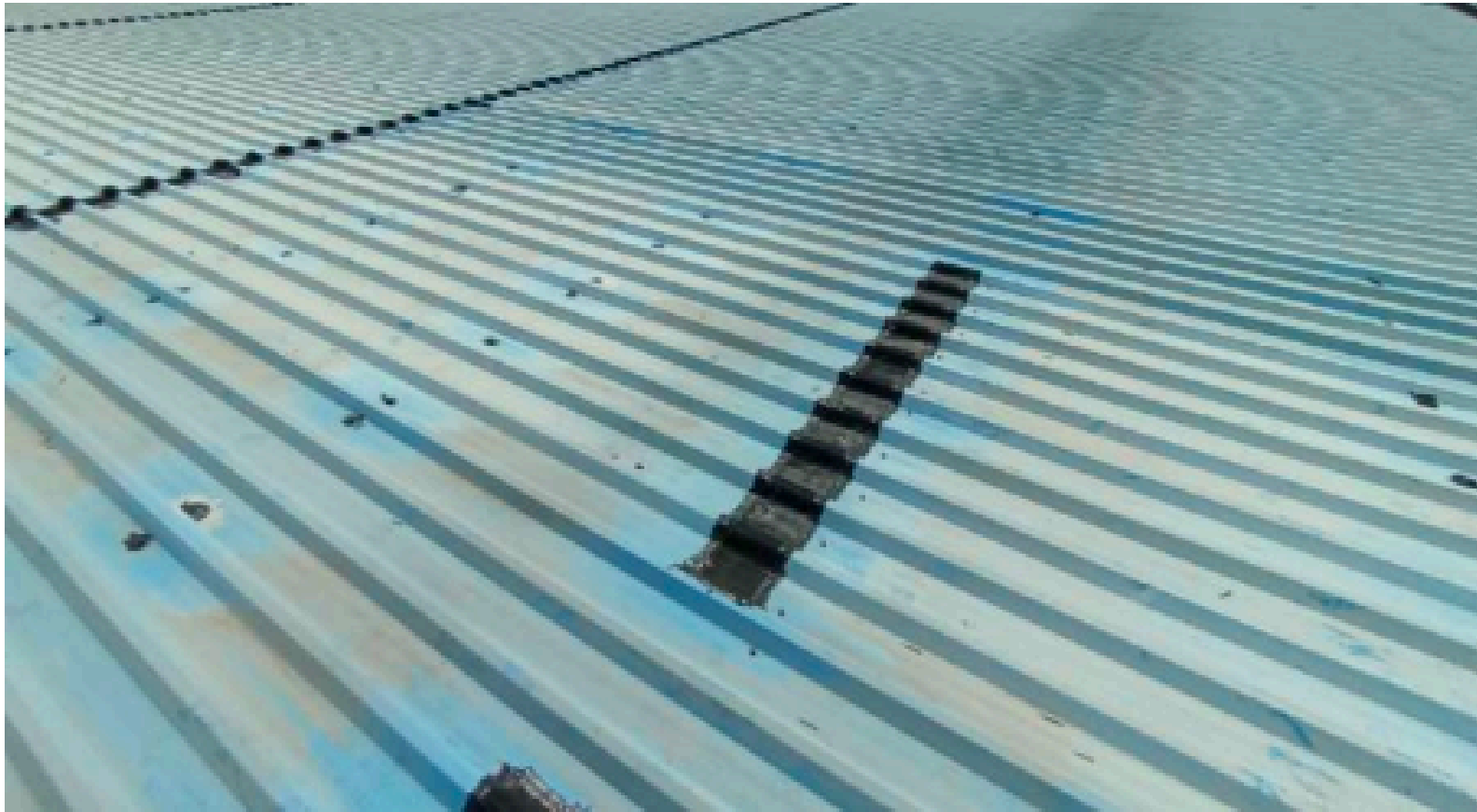
# ROOFING **JOB PROJECTS**

**Al Rawabi Dairy Co.** *Dubai 6,000m<sup>2</sup> (Metal Roof Waterproofing)*



# ROOFING **JOB PROJECTS**

**Al Khattal Real Estate** *Dubai 9,900 m<sup>2</sup> (2 x Warehouses)*

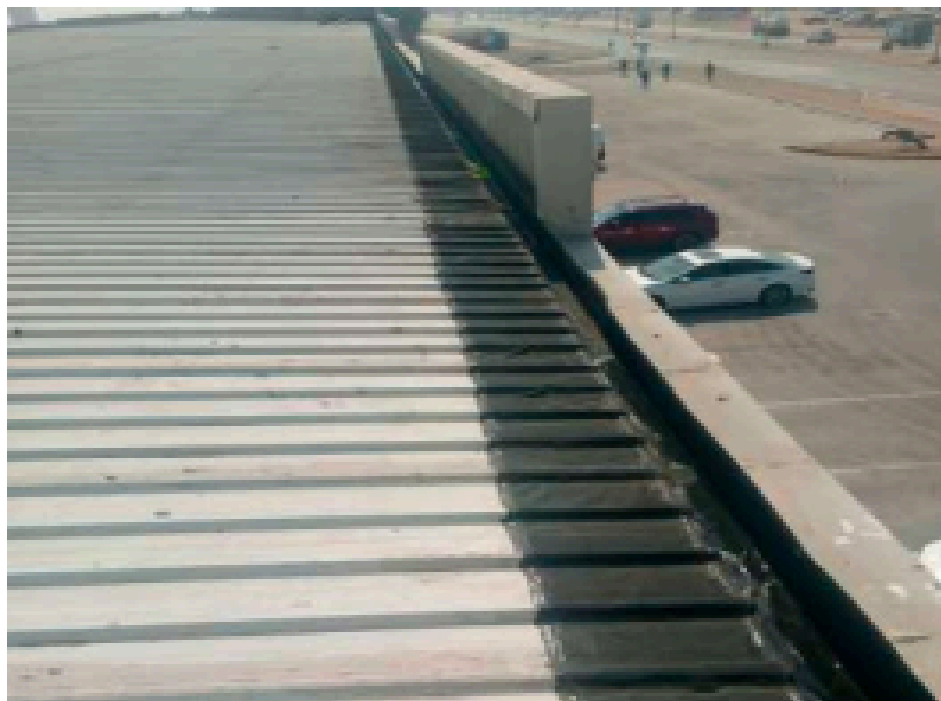


# ROOFING **JOB PROJECTS**

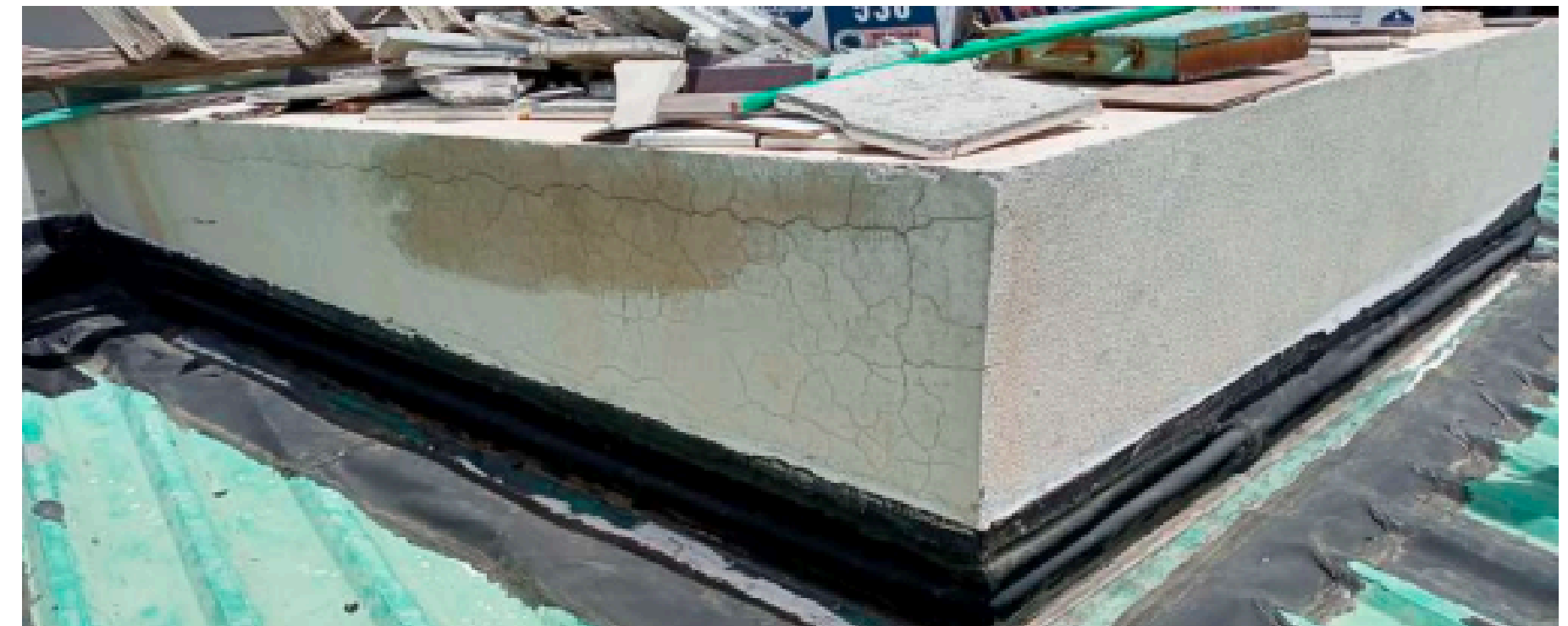
**Navitas Chemicals FZE** Sharjah 1,000 m<sup>2</sup> (*Roof Waterproofing*)



## **Darwish Bin Ahmed & Sons** *Abu Dhabi (Gutter Waterproofing - 300lm)*



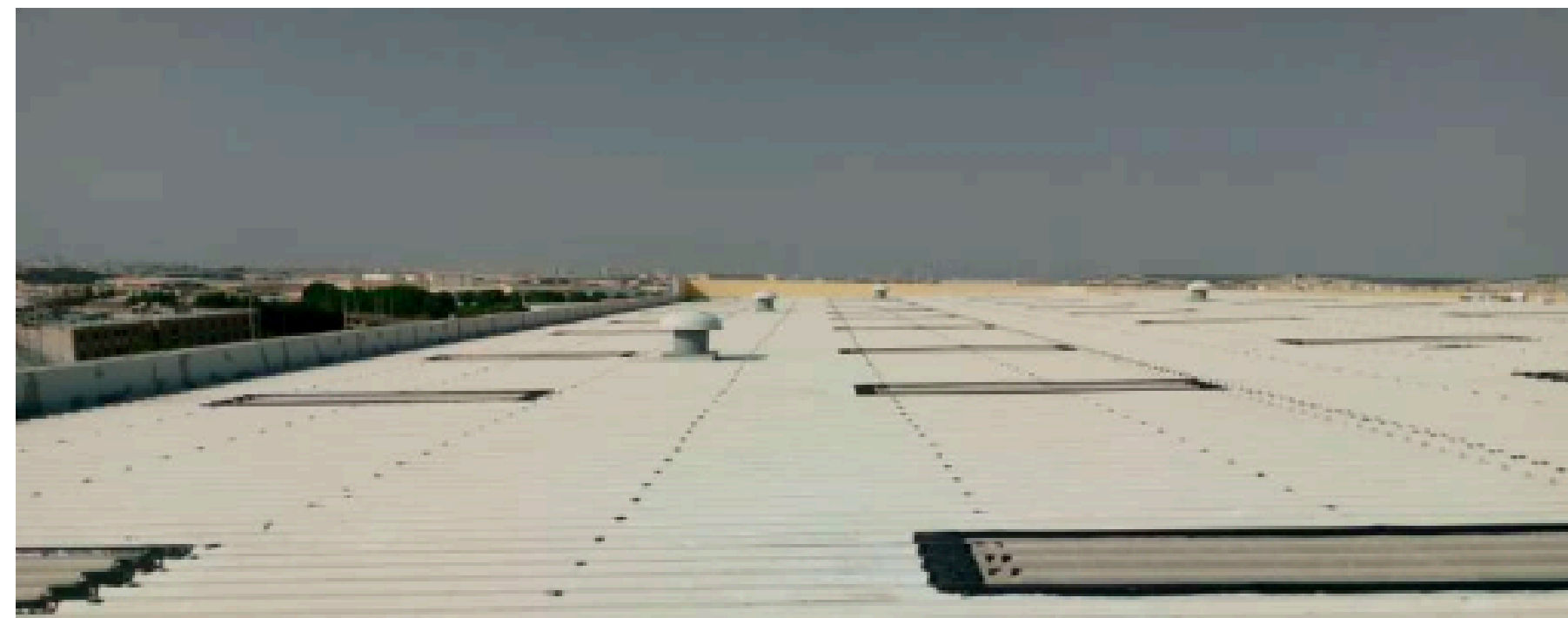
## Bin Shabib Contracting Dubai (Metal Roof Waterproofing) - 1,000m<sup>2</sup>



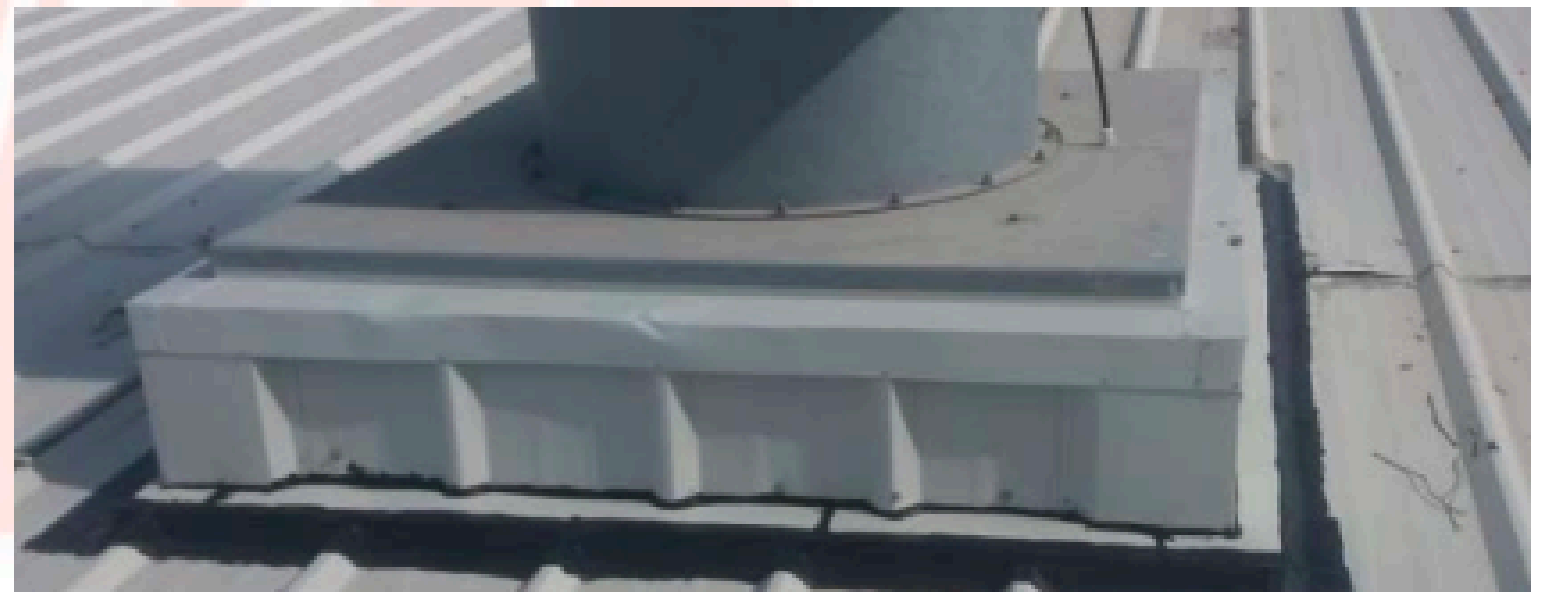
# Muhammad Bin Rashid Space Centre Dubai (Metal Roof Waterproofing) - 1,080m<sup>2</sup>



## **AFSGT** Dubai, 5,000 m<sup>2</sup> (Metal Roof Waterproofing)



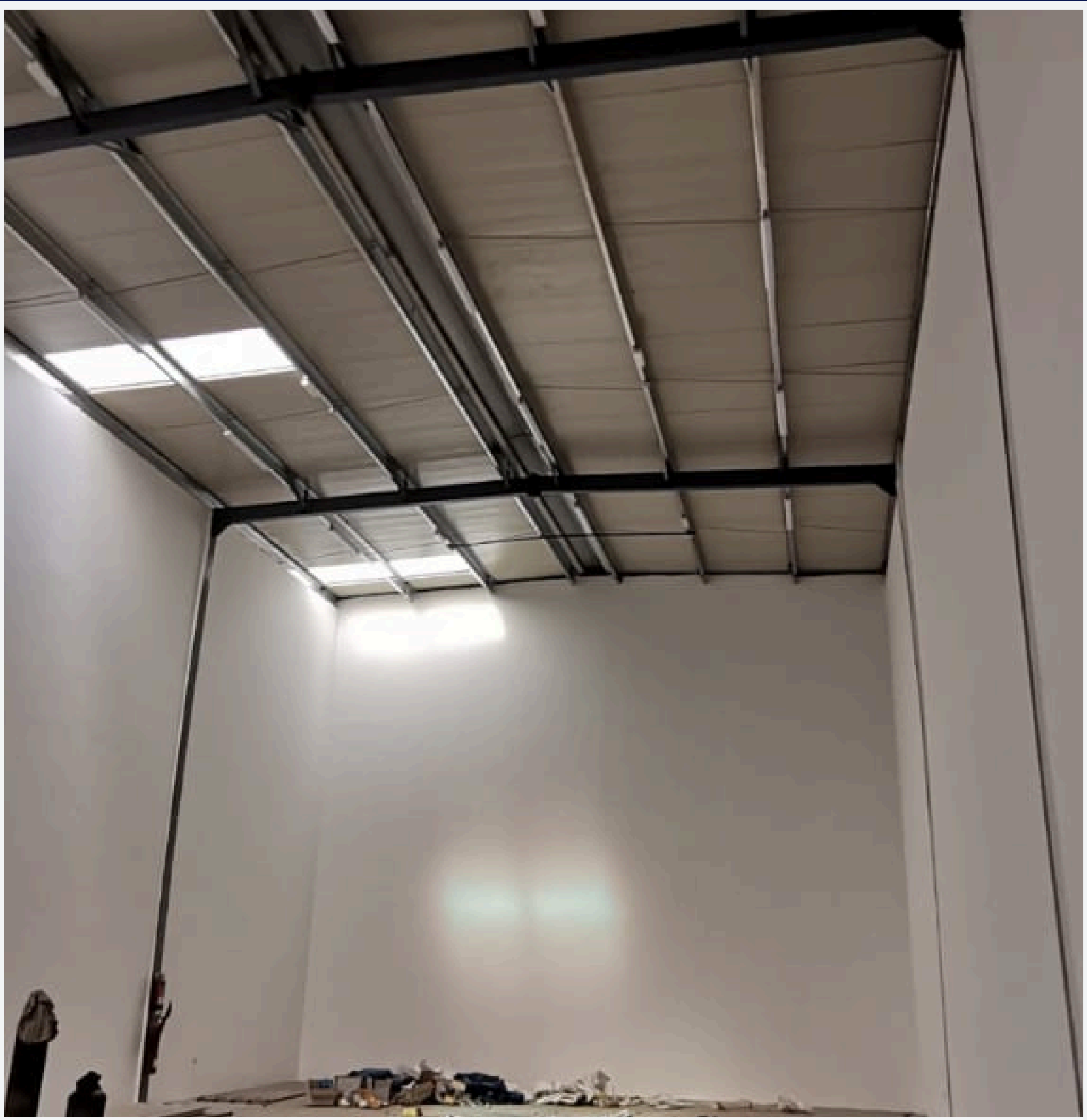
## Ittehad Paper Mills Abu Dhabi (Ventilators Waterproofing)





# FABRICATION PROJECTS

**Al Amal (Al Soum Real Estate Warehouses 3000m2) Refurbishment of Warehouses (Structural/Civil/Electrical Works)**



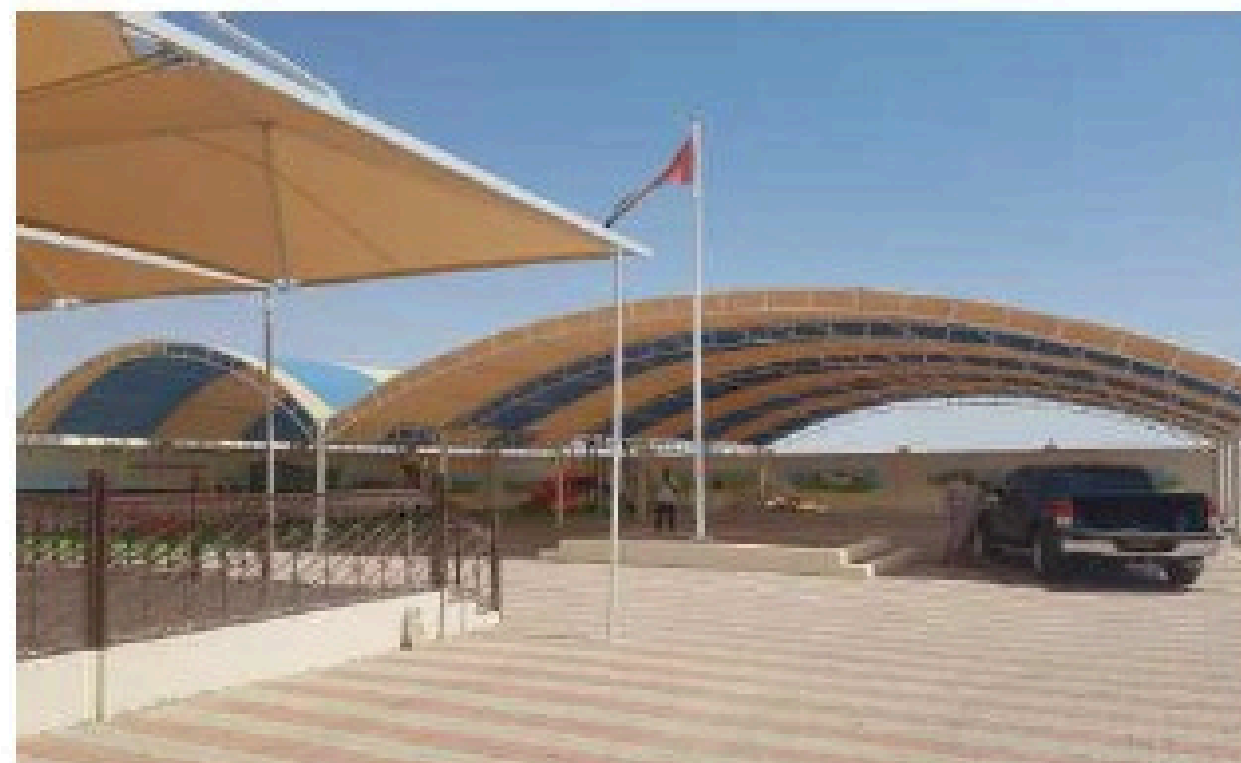
# Star Cement Factory Ras Al Khaimah 6,000m<sup>2</sup> (Pre-Engineered Building Erection)



## Iffco Ajman 3,600 m<sup>2</sup> (2 x Pre-Engineered Buildings Erection - Poultry Farm)



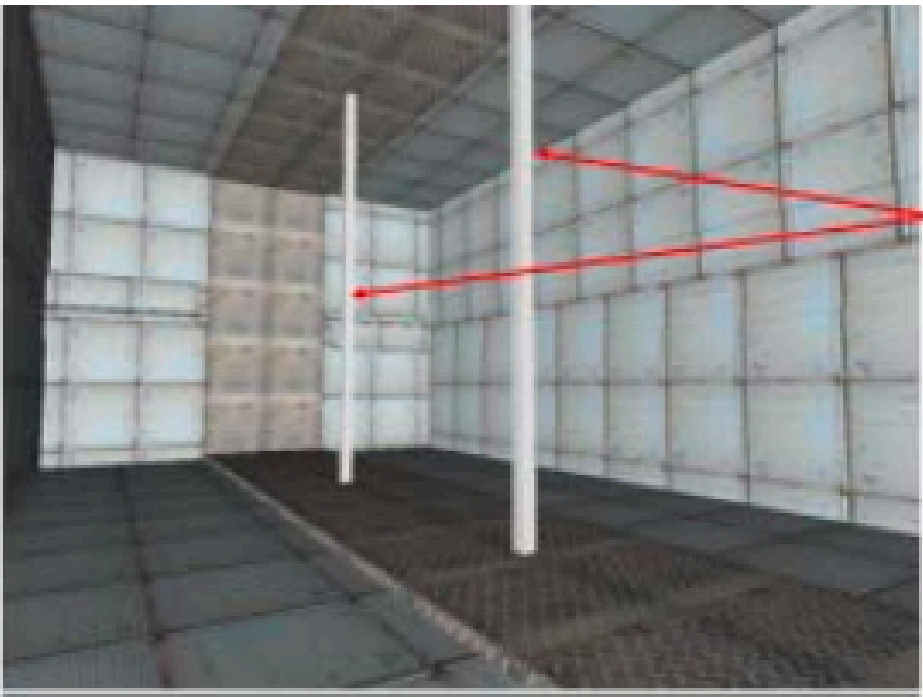
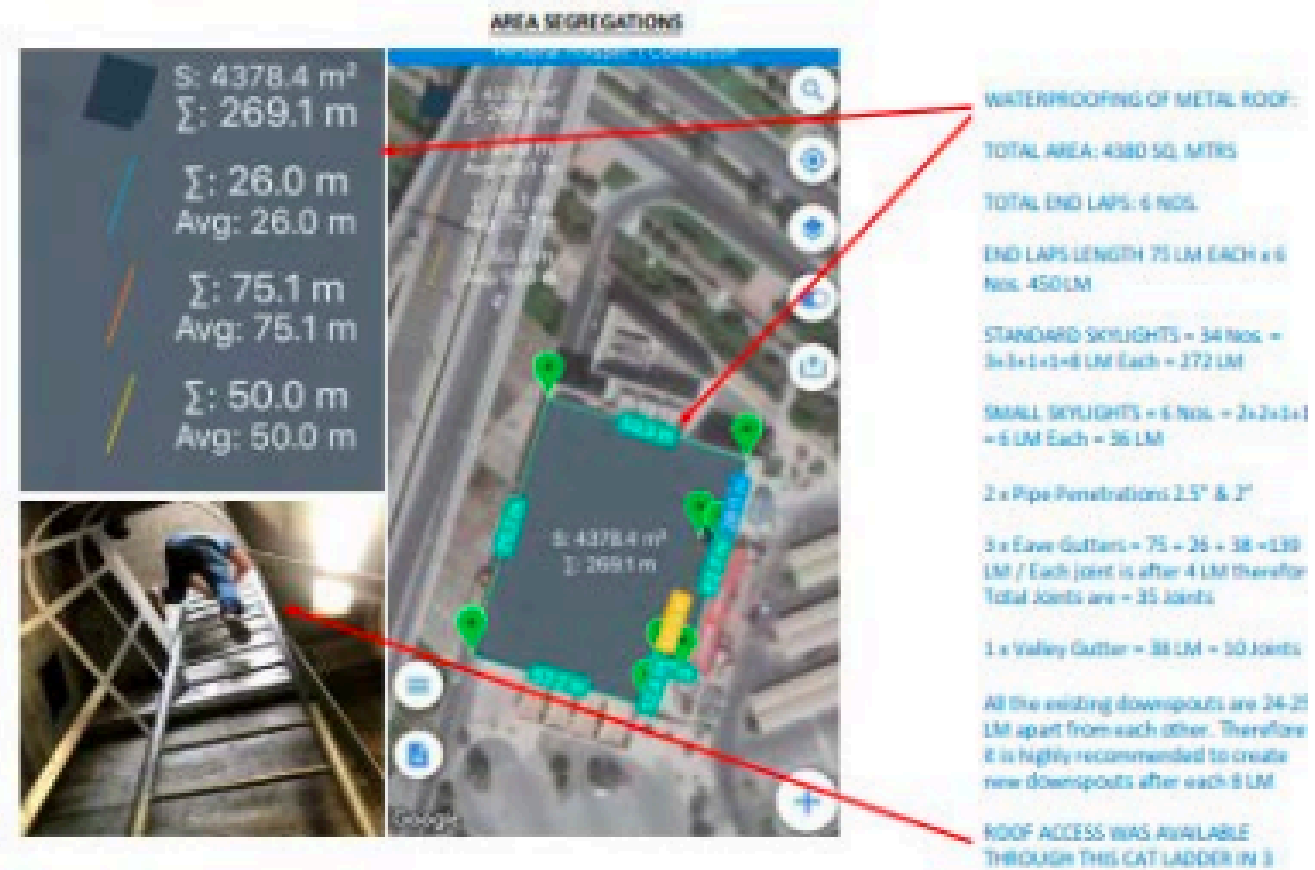
## Dubai Hills Dubai, UAE (Play Ground Metal Roof Shade)



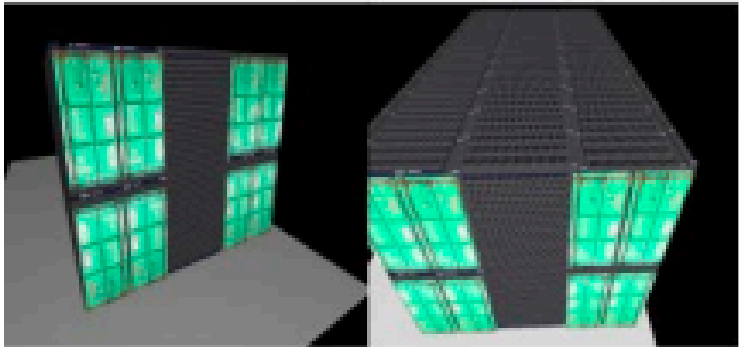
## Transworld Sharjah, 2,800 m<sup>2</sup> (Pre-Engineered Building Erection)



# Detailed Site Survey Reports with Measurements using Satellite Imaging Software's with Problem Identifications & Solutions as well as Consulting Services

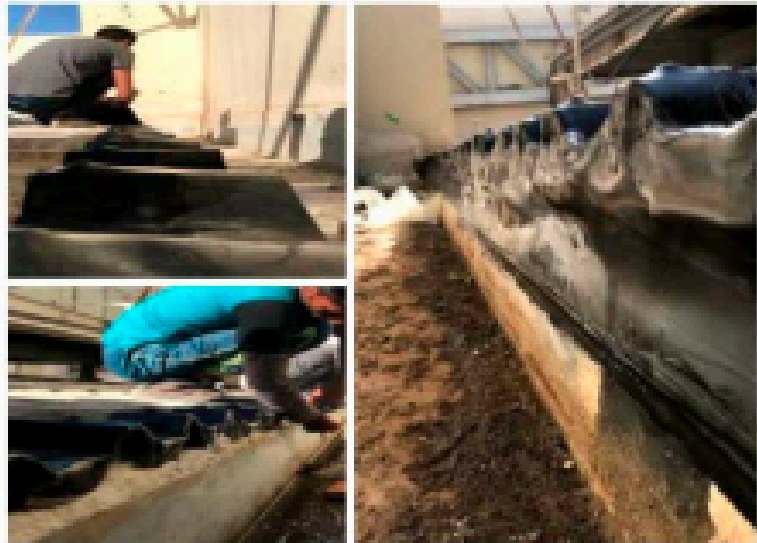


Both Frame Beams will be cut from the Middle and middle will be supported with 2 Nos. of 100x100mm x 2 sides support columns



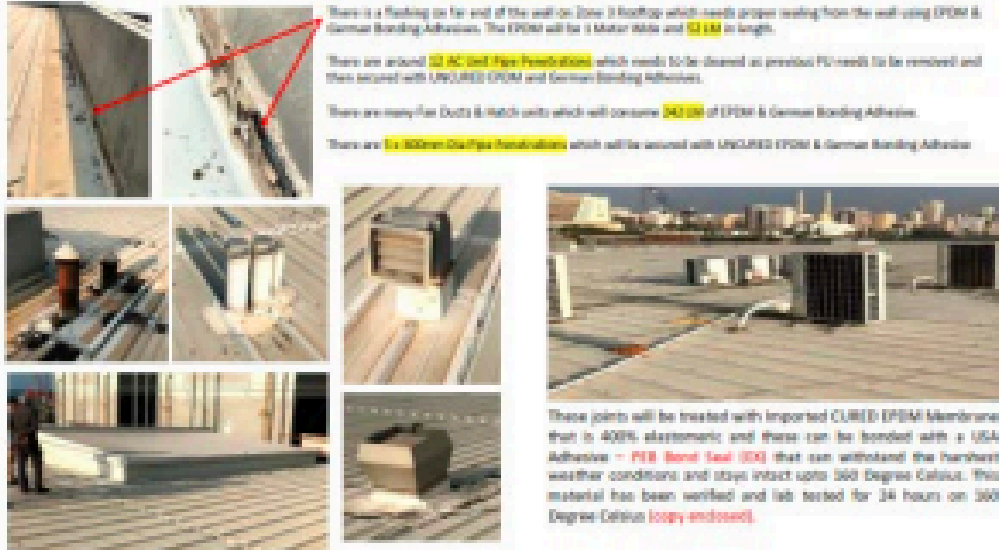
The Eave Gutter is around 100 LM long and 100mm wide. All the downspouts are clogged up and it has heavy mud in it which needs thorough cleaning and joint sealing after every 4 meters, therefore resulting in treatment of 35 x 30 = 105 joints.

The termination under the sheets to be treated with UNICURED EPDM to prevent backing of the water when the gutter is clogged up. Also, new downspouts are recommended to be created after each 8 LM to allow the water flow of the stagnant water.



The UNICURED EPDM is a special product being used to prevent backing of the water from the sheet terminations and gaps. This is being soaked properly at the joint terminations using the German Bonding Adhesive.

These joints will be treated with Imported UNICURED EPDM Membrane that is 400% elastomeric and these can be bonded with a German Adhesive - P19 Bond Seal (EX) that can withstand the harshest weather conditions and stays intact upto 160 Degree Celsius. This material has been verified and lab tested for 24 hours on 160 Degree Celsius (copy enclosed).

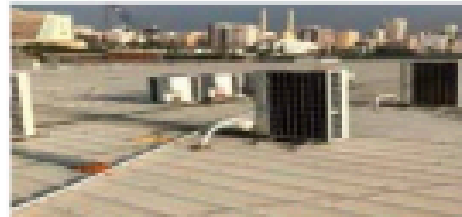


There is a flashing on far end of the wall on Zone 3 rooftop which needs proper sealing from the wall using EPDM & German Bonding Adhesive. The EPDM will be 1 Meter Wide and 1.5 LM in length.

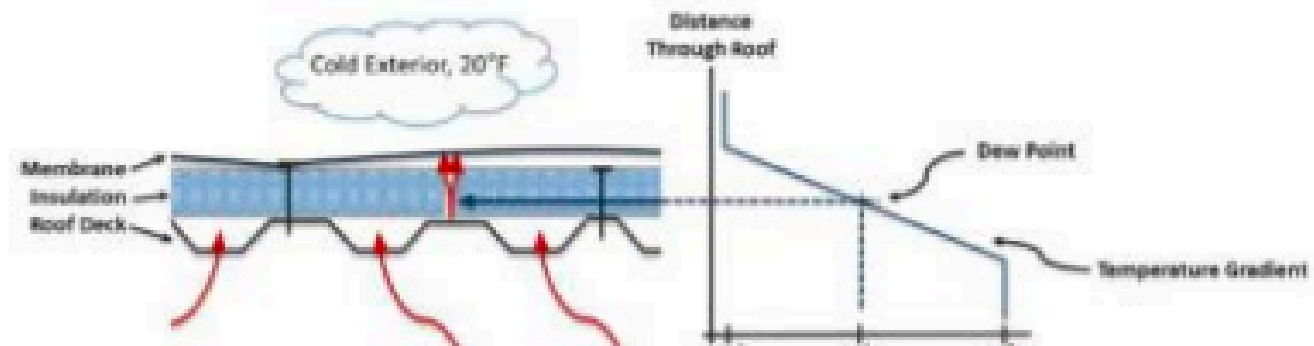
There are around 12 AC Unit Pipe Penetrations which needs to be sealed as previous PU needs to be removed and then soaked with UNICURED EPDM and German Bonding Adhesive.

There are many Fan Ducts & Hatch units which will consume 343 LM of EPDM & German Bonding Adhesive.

There are 1x 100mm Dia Pipe Penetrations which will be soaked with UNICURED EPDM & German Bonding Adhesive.



These joints will be treated with Imported CURED EPDM Membrane that is 400% elastomeric and these can be bonded with a USA Adhesive - P19 Bond Seal (EX) that can withstand the harshest weather conditions and stays intact upto 160 Degree Celsius. This material has been verified and lab tested for 24 hours on 160 Degree Celsius (copy enclosed).

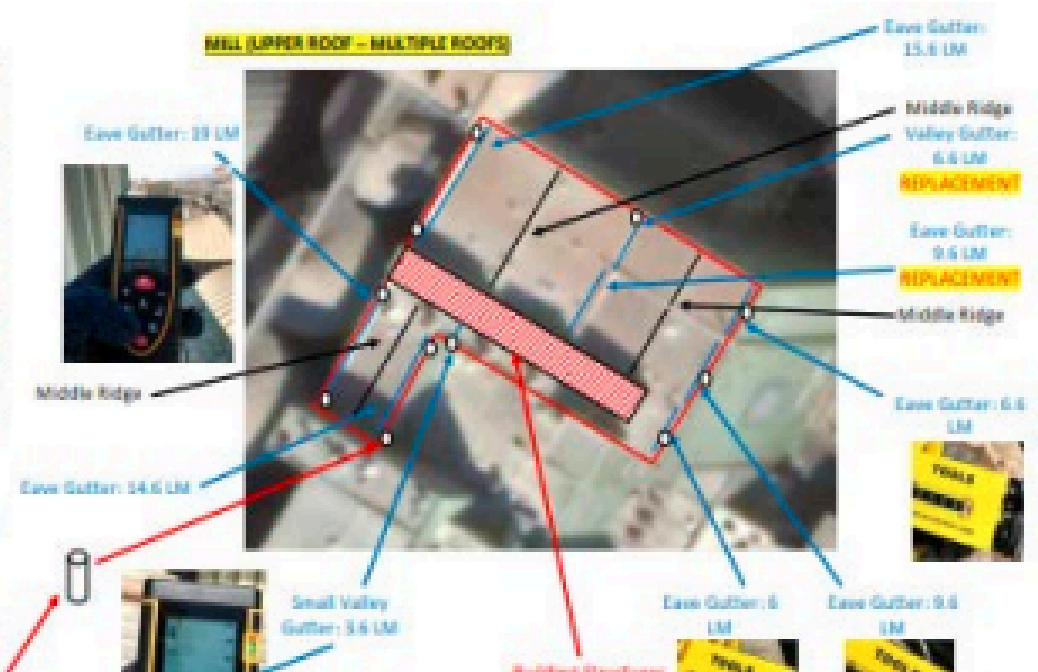


## Condensation Problem in normal days due to constant temperature change

### Condensation, Dew Point, and Roofing

Except in extremely arid climates, there is always some amount of water vapor in the air around us. When that air comes into contact with a cold surface, that water vapor condenses as a liquid onto the surface. A good example of this is the water droplets on the side of the glass of ice water. These droplets are commonly known as "condensation" and are what results when the air gets too cold to hold the water vapor that is in it. Even when a cold surface is not available, if the air temperature suddenly drops, water vapor condenses out as mist or fog. Air can only hold so much water - more at higher temperatures and less at colder temperatures.





شهادة التسجيل في ضريبة القيمة المضافة  
أصدرت بموجب الصلاحية الممنوحة بموجب المادة (4) من المرسوم بقانون رقم (13) لسنة 2016 بشأن إنشاء الهيئة الاتحادية للضرائب

Certificate of Registration for Value Added Tax in the United Arab Emirates  
Issued under the authority allocated by Art. 4 of the Federal Decree-Law No. 13 of 2016

The Federal Tax Authority certifies that the entity below is a registered person for Value Added Tax in the UAE

تشهد الهيئة الاتحادية للضرائب أن الجهة التالية مسجلة لضريبة القيمة المضافة في الإمارات العربية المتحدة

Tax Registration Number	104619653900003	رقم التسجيل الضريبي
Legal Name of Entity (Arabic)	ليك لوك انزوليشن كونتركتنج ش.م.م	الاسم القانوني للكيان (باللغة العربية)
Legal Name of Entity (English)	LEAK LOCK INSULATION CONTRACTING L.L.C	الاسم القانوني للكيان (باللغة الانجليزية)
The Registered Address and Contact Number	Office F31, Commercial 5 Building, Saih Shuaib 2, Dubai Industrial City, Dubai, Dubai +971529676127	المكان المسجل ورقم التواصل
Effective Registration Date	01/10/2024	تاريخ التسجيل الفعلي
First VAT Return Period	01/10/2024 - 31/12/2024	فترة أول إقرار ضريبة القيمة المضافة
VAT Return due date	28/01/2025	تاريخ استحقاق الإقرار الضريبي لضريبة القيمة المضافة
Start and end dates of Tax periods	1st Apr to 30th Jun, 1st Jul to 30th Sep, 1st Oct to 31st Dec, 1st Jan to 31st Mar	تواريخ بدء وانتهاء الفترات الضريبية

List of Main trade license, Sole Establishments and branches licenses details under the registered taxable person:

قائمة الرخصة التجارية الرئيسية والتأسيسات الفرعية والفروع المستندة ضمن التسجيل الضريبي:

Legal Name	License Issuing Authority	License Number/رقم الرخصة	جهة الترخيص	الاسم القانوني
------------	---------------------------	---------------------------	-------------	----------------

يرجى التأكد من صحة تفاصيل الشهادة. يجب إبلاغ الهيئة الاتحادية للضرائب في حال تغير الأسس التي حصلت فيها على رقم التسجيل الضريبي الخاص بك.

\*Please check that the details on this certificate are correct. You must inform the Federal Tax Authority of any change on the basis of which you obtained your Tax Registration Number.



Legal Name	License Issuing Authority	License Number/رقم الرخصة	جهة الترخيص	الاسم القانوني
1 LEAK LOCK INSULATION CONTRACTING L.L.C	Dubai Economy and Tourism	1373716	اقتصادية وسياحة دبي	ليك لوك انزوليشن كونتركتنج ش.م.م في البنية والتأسيسات الهندسية

يرجى التأكد من صحة تفاصيل الشهادة. يجب إبلاغ الهيئة الاتحادية للضرائب في حال تغير الأسس التي حصلت فيها على رقم التسجيل الضريبي الخاص بك.

\*Please check that the details on this certificate are correct. You must inform the Federal Tax Authority of any change on the basis of which you obtained your Tax Registration Number.





## رخصة تجارية Commercial License

### تفاصيل الرخصة / License Details

رقم الرخصة	1373716	License No.
اسم الشركة	ليك لوك لتكريب المواد العازلة في البنية والمنشآت المدنية ش.ذ.م.م	Company Name
الاسم التجاري	ليك لوك لتكريب المواد العازلة في البنية والمنشآت المدنية ش.ذ.م.م	Business Name
فئة الرخصة	دائرة التنمية الاقتصادية	License Category
الشكل القانوني	شركة ذات مسؤولية محدودة - الشخص الواحد (ذ.م.م)	Legal Type
تاريخ الإصدار	05/06/2024	Issue Date
رقم الرخصة الأم	1373716	Main License No.
عسوية الغرفة	541971	DCCI No.
تاريخ الإنتهاء	04/06/2026	Expiry Date
رقم العالمى	D&B D-U-N-S ® N	
رقم السجل التجارى	2338565	Register No.

### الاطراف / License Members

رقم الشخص / No.	الإسم / Name	الجنسية / Nationality	الصفة / Role	الحصص / Share
1632235	محمد فارس خان محمد دوائر خان	باكستان / Pakistan	مالك / Shares Owner	100.00% حصص
	MUHAMMAD FARIS KHAN MUHAMMAD DILAWAR KHAN			
1632235	محمد فارس خان محمد دوائر خان	باكستان / Pakistan	مدير / Manager	
	MUHAMMAD FARIS KHAN MUHAMMAD DILAWAR KHAN			

Print Date 16/09/2025 18:28 تاريخ الطباعة

Receipt No.

رقم الإيصال

يمكنك الآن تجديد رخصتك التجارية من خلال الرسائل النصية القصيرة، أرسل رقم الرخصة إلى 6969 (دو/اتصالات) للحصول على إذن الدفع.

Now you can renew your trade license by sending a text message (SMS). Send your trade license number to 6969 (Doha/communications) to receive document voucher.

Get FREE access to Zoha One for the first year! أرسل على زوها ون مجاناً لسنة الأولى

Zoha.com/det

واتبة إلكترونية معتمدة وصادرة بدون توقيع من دائرة الاقتصاد والتجارة في دبي. إمرأجة صحة البيانات الواردة في الرخصة يرجى اتباع ومراعاة التعليمات الواردة.

This is a certified e-document issued without signature by the department of Economy and Tourism. Kindly scan the QR Code to verify the certificate.



# HSE Policy

## LEAK LOCK

### INSULATION CONTRACTING LLC

#### Health & Safety Management System and Procedures

**1. Introduction** Leak Lock Contracting is committed to ensuring the highest standards of health and safety across all its operations. Our Health & Safety (H&S) Management System is designed to comply with OSHA (Abu Dhabi Occupational Safety and Health) guidelines and other relevant regulations. This document outlines our approach to risk management, safety procedures, and responsibilities to create a safe working environment for all employees, subcontractors, and stakeholders.

**2. Health & Safety Policy Statement** Leak Lock Contracting prioritizes health and safety in every aspect of its operations. We aim to:

- Prevent workplace accidents and occupational illnesses.
- Identify and mitigate risks through proactive measures.
- Ensure compliance with all legal and regulatory requirements.
- Promote a culture of safety awareness and continuous improvement.
- Provide necessary training and resources to all employees.

#### 3. Responsibilities and Accountability

- **Management:** Ensure implementation of H&S policies, provide resources, and promote safety culture.
- **Supervisors:** Monitor safety practices, enforce policies, and report hazards.
- **Employees:** Follow safety procedures, report hazards, and participate in training.
- **Safety Officers:** Conduct risk assessments, audits, and ensure compliance.

#### 4. Risk Assessment and Hazard Control

- Conduct risk assessments in accordance with OSHA guidelines.
- Identify workplace hazards and implement control measures.
- Regularly review and update risk assessments.

#### 5. Safe Work Procedures

- **Roof Waterproofing and Installation:** Use appropriate PPE, secure tools, and follow fall protection measures.
- **Hot Work (Welding, Cutting, etc.):** Implement fire safety controls and provide fire extinguishers.
- **Material Handling and Storage:** Use mechanical aids and proper lifting techniques.
- **Emergency Procedures:** Establish evacuation plans, first-aid provisions, and fire response protocols.

#### 6. Personal Protective Equipment (PPE)

- Mandatory PPE includes helmets, gloves, safety shoes, and harnesses.
- PPE must be inspected regularly and replaced when necessary.

## LEAK LOCK

### INSULATION CONTRACTING LLC

#### 7. Incident Reporting and Investigation

- All incidents, near misses, and injuries must be reported immediately.
- Investigations will be conducted to determine root causes and preventive measures.
- Documentation of incidents will be maintained for continuous improvement.

#### 8. Training and Awareness

- Regular H&S training for all employees.
- Toolbox talks before high-risk activities.
- Safety drills and emergency response training.

#### 9. Monitoring and Continuous Improvement

- Regular audits and inspections to assess compliance.
- Review H&S policies annually to integrate best practices.
- Encourage employee feedback for safety enhancements.

**10. Conclusion** Leak Lock Contracting is dedicated to fostering a safety-first culture to protect our workforce and stakeholders. By following this H&S Management System, we ensure a secure and compliant work environment, minimizing risks and maintaining operational excellence.

  
FOR LEAK LOCK INSULATION CONTRACTING LLC

# Pre-Qualification And Technical Documents

## BONDING ADHESIVE

### TECHNICAL DATA SHEET



#### PRODUCT DESCRIPTION

Bonding Sealant is a high-performance, neutral cure weather resistance silicone sealant. It has non-corrosive property, 50% Joint movement capability and low Tensile strength. It provides strong bonds to a variety of construction materials. Low string upon gunning, ease of application and ready to use. It has an excellent adhesion to glass, aluminium, glazed surfaces and metals, plastics, tiles, wood, rubber, concrete and other building materials.

#### TECHNICAL PROPERTIS

Properties	Test Method	Unit	Specifications
Chemical Base			1-C Silicone
Cure Mechanism			Moisture
Cure Type			Neutral
Joint Movement Capability	ASTM C 719	%	+/-50
As Supplied @ 25°C, 50% RH			
Color			Black, Grey, White
Consistency			Homogeneous paste
Density	ASTM D 1475		1.27 ± 0.02
Flow Properties	ASTM C 639	mm	0 (Non-sag)
Skin Over Time	ASTM C 679	minutes	Approx. 8
Tack Free Time	ASTM C 679	minutes	Approx. 13
Depth Cure, 24 hrs	Lab Test	mm	~ 2.4
As Cured – 7 Days @ 25°C, 50% RH			
Hardness (Shore A)	ASTM D 2240	Points	30 – 35
Tensile Strength	ASTM D 412	N/mm <sup>2</sup>	≤ 1.80
Elongation	ASTM D 412	%	≤ 750
Young's Modulus	ASTM D 412	MPa	≤ 0.35
Service Temp.		°C	-40 to +250
Application Temp.		°C	5 to 45

Note:

\* Curing time (Skin Over Time & Tack Free Time) may vary depending on climatic condition during application.

\* Information on this data sheet is subject to change without prior notice and should not be used for writing specifications

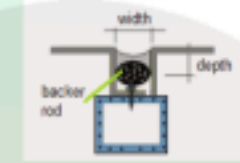
#### TYPICAL USES

- Interior and Exterior Applications
- Sealing dynamically moving joints such as expansion and control joints
- Concrete panel joints
- Perimeter joint sealing (windows, doors panels, and frames, etc.)
- Façade & curtain wall application
- Good bonding between metal surface and rubbers like EPDM

#### KEY FEATURES

- Non-Corrosive
- Non-Stain
- UV & Weather-Resistance
- Excellent Adhesion



COLOR	Bonding Adhesive Sealant is available in Black color.. caulking cartridges (280ml), packed sausages (600ml) and 200 Liter drum
SURFACE PREPARATION	The substrate areas that will be in contact with sealant must be clean, dry and free of all loose materials, dust, dirt, rust, oil and other contaminants. Non - porous substrates should be cleaned with a solvent and a clean, lint - free, cotton cloth. Wipe dry immediately with another such cloth before the solvent evaporates from the surface. Porous surfaces may need to be grinded, free of dust and cleaned
JOINT DESIGN	<p>For General Use</p> <p>joints up to 12 mm wide, width to depth ratio = 1:1</p> $\frac{\text{width}}{\text{depth}} = \frac{1}{1} \text{ or } w = d$ <p>joints over 12 mm wide, width to depth ratio = 2:1</p> $\frac{\text{width}}{\text{depth}} = \frac{1}{0.5} \text{ or } w = 2d$  <p>Install backing material, spacer, or joint filler to ensure correct depth to width ratio is achieved according to design. Apply masking tapes to areas adjacent to joints to ensure neat sealant lines.</p>
TOOLING AND FINISHING	Immediately tool sealant after application and before skin formation. Tooling of sealant should be done in one continuous stroke. Remove masking tape immediately after tooling is completed.
CLEANUP AND REMOVAL	Uncured sealant may be removed from tools, equipment and non-porous surfaces with solvents. For porous substrates, allow the sealant to cure before removal by peeling or other mechanical means. Cured sealant can only be removed mechanically.
LIMITATION	Not paintable. Substrate compatibility test is always recommended.
STORAGE AND SHELF LIFE	When stored in original unopened container at or below 77°F (25°C) in dry warehouse conditions, The adhesive has a shelf life of 12 months from manufacturing date. Containers should always be kept sealed when not in use. Application temperature is 5 to 45 °C
HANDLING PRECAUTIONS	Use in well-ventilated area. Direct contact of uncured sealant may irritate eyes and skin. Over exposure to vapor may irritate eyes, nose and throat. Do not handle contact lenses with sealant on hands. In case of eye contact, flush eyes with water for 15 minutes. Obtain medical attention. In case of skin contact, remove from skin and flush with water.

KEEP OUT OF REACH OF CHILDREN • KEEP CONTAINER TIGHTLY CLOSED • FOR INDUSTRIAL & PROFESSIONAL USE

The information and data contained herein is believed to be accurate and reliable; however, it is the user's responsibility to determine suitability of use. Since the supplier cannot know all the uses, or the conditions of use to which these products may be exposed, no warranties concerning the fitness or suitability for a particular use or purpose are made. We reserves the right to change the properties of its products without notice

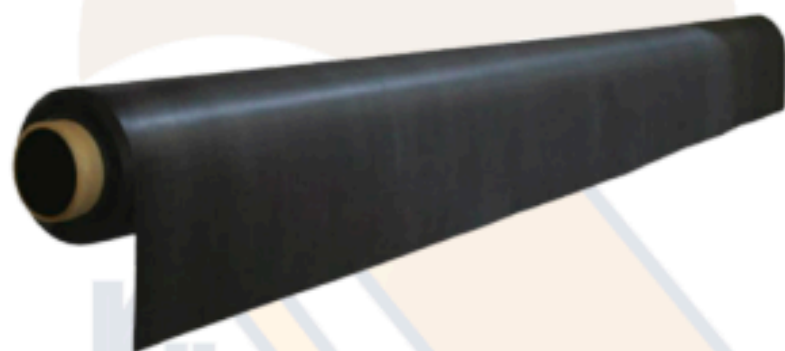
## EPDM MEMBRANE TDS



# TECHNICAL SPECIFICATIONS

EPDM membrane based roofing protection, is an application developed in the USA almost four decades ago and continues to be one of the most popular applications of the polymer.

EPDM Single Ply Waterproofing System is specially designed to protect all reinforced concrete structures and metal surfaces on or under the ground in the Arabian Peninsula. Due to exceptional weather and water resistance, EPDM sheets are used for the protection of rooftops of commercial and residential buildings, Airport Terminal buildings and any structure where protection from rain water seepage is of prime importance.



### DESCRIPTION

The EPDM is a cured single-ply synthetic roofing membrane made of ethylene, propylene, diene, terpolymer. Depending on roofing dimensions, the waterproofing surface may be seamless. In other situation, seams can be made using adhesives or tape.

The standard gauge thickness of RUBBERGUARD EPDM Membranes is 1.0mm, 1.20mm and 1.50mm. However upon customer request membranes of any thickness ranging from 0.75 to 3.0mm can be supplied.

### PREPARATION

Product: Allow the membrane to relax for approximately 30 minutes before installation.

Substrate: Roofing structure need to be stable enough to support the temporary loading. Substrate needs to be clean, smooth, dry and free of sharp edges, loose or foreign materials, oil, grease and other materials that may damage the membrane.

### APPLICATION

Install EPDM membrane in accordance with current specifications and details.

### COVERAGE

The dimensions of the membrane are calculated to cover the seam overlaps (75 - 100mm for standard seams - 180mm for B.I.S) and upstands. Provide an additional length (100mm) at upstands for easy manipulation.

### PHYSICAL

Elastomeric membrane with a good combination of high elasticity and tensile strength.

Water-resistant.

Temperature stable from -45 °C to 130 °C

Retains its elasticity at low temperature and resistance to temperature shocks up to 250 °C.

Excellent resistance to alkali rains, less resistant to oil products. Contact with some kind of oils,

petroleum

products, hot bitumen and grease must be avoided.

Excellent resistance to UV radiation and ozone concentration.

### TECHNICAL

Base EPDM

Colour & Finish Black, Fabric Finish/ smooth finish

Solvents None

Solids (%) 100

State Cured

Storage Store the membrane in a dry place until use.

## TECHNICAL SPECIFICATIONS - EPDM WATERPROOFING MEMBRANE

NO.	PROPERTY	TEST STANDARD	SPECIFIED VALUES**	TYPICAL
1	Specific Weight, kg/m <sup>2</sup>	0.75 mm thick sheet	--	0.90±0.20
		1.00 mm thick sheet	--	1.20±0.20
		1.14 mm thick sheet	--	1.36±0.20
		1.20 mm thick sheet	--	1.44±0.20
		1.50 mm thick sheet	--	1.80±0.20
		2.00 mm thick sheet	--	2.40±0.20
2	Tolerance on nominal gauge	ASTM D 412	±10%	± 10%
3	Texture & Color	Visual Check	--	Fabric Finish, Black
4	Tensile strength, min., MPa	ASTM D 412	9.0	10.5
5	Elongation at break, min., %	ASTM D 412	300	475
6	Tear strength, min., kN/m	ASTM D 624 Die C	26.3	34.0
7	Factory Seam Strength, Min, Kn	ASTM D 816 Method B (Modified)	8.8 OR Membrane Rupture	Membrane Rupture
8*	Brittleness Temperature, °C	ASTM D 746	- 45	- 55
9*	Resistance to heat ageing (Properties after 168 hrs. exposure @ 116 °C)	ASTM D 573	--	--
	Tensile strength, min., MPa	ASTM D 412	8.3	10.1
	Elongation at break, %	ASTM D 412	200	230
	Tear strength, kN/m	ASTM D 624	21.9	31.5
	Linear Dimensional Change, Max, %	ASTM D 1204	±1.0%	- 0.5
10*	Ozone Resistance Condition after exposure to 100 pphm ozone in air for 168 hrs @ 40 °C (Sample at 50% strain)	ASTM D 1149	No Cracks	No Cracks





LEAK LOCK INSULATION  
CONTRACTING LLC

# Wind Driven Turbine Ventilators

Constructed with super light weight aluminium alloy  
with revolutionary Fluorine Carbon Polyester Coating

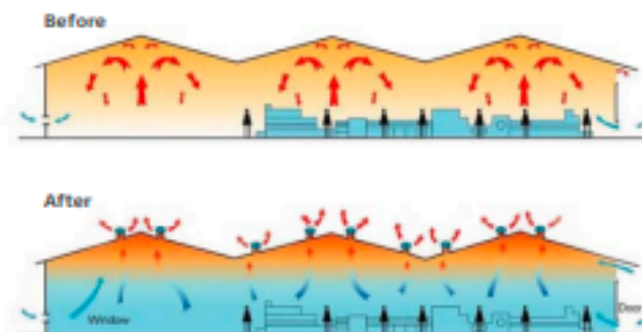


> RESIDENTIAL > COMMERCIAL > INDUSTRIAL

## Wind Driven Turbine Ventilators

### How it Works

our ventilators work by drawing stale air up-wards and out of the building. This air is then replaced by fresh air which is drawn in by way of a convection current through other openings in the building.



### Key Benefits

- Low cost
- Easy Installation
- Fits all roof types
- Efficient
- Silent running
- Corrosion resistant
- Eco-friendly
- Fully waterproof
- 5 sizes available
- No wiring
- No maintenance
- No ongoing costs

#### EXTRACTS:

- Hot, humid air
- Polluted air and fumes
- Condensation
- Smells and animal odours
- Corrosive air

### Installation

Each ventilator is boxed with full installation instructions, and a 15 year manufacturer's warranty. Ideally ventilators should be positioned as close to the peak of the roof as possible. If this is not an option, a cowl flashing can be made to fix further down the roof.

### Superiority

- 30% more venting efficiency than Stainless Steel ventilators
- Ventilators is suitable for corrosive fume extraction and coastal areas due to the anti-corrosive fluoro carbon polyester coating.

### Construction

our ventilators are constructed using a high quality revolutionary aluminium alloy with a fluoro carbon polyester coating.

This Coating creates a corrosion resistant ventilator superior to others on the market. Its super light weight allows for a greater speed spin sensitivity starting at only 0.12 metres per second.

our ventilators contain a high quality sealed and self-lubricating NSK axial bearing and re-inforced supports.

Note: Ventilators not powdercoated by Roofquip Ltd will result in the warranty being void. Please contact us to discuss powdercoating options



NSK axial bearing, sealed, self lubricating

32 pieces dual-arc vanes made from fluorine carbon coating aluminum alloy top keep rain from flowing backwards.

Fireproofing reinforced nylon plastic support with high strength, high tenacity and easy recovering from deformation

0.7mm Korea Puizing 304/2B stainless steel plate as medium circle

Variable Pitch



# IN-COUNTRY VALUE CERTIFICATE



Certificate No.: 147678  
Issue Date: 18.11.2025  
Valid Until: 17.11.2026

## LEAK LOCK INSULATION CONTRACTING L.L.C

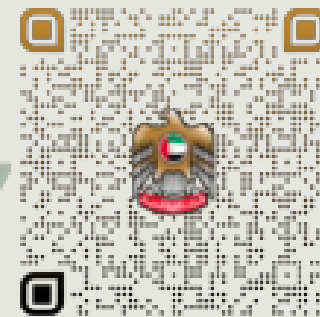
12.81%

### Company General Information

License No.: 1373716  
Company Type: SME in UAE  
Financial Year End Date: 31.12.2024  
Company Based In: Within UAE  
Company Business: SERVICE PROVIDER

For Cases of Re-Certification  
Re-Certification (\*) No.:

Reason for this Re-Certification



Scan the QR code to verify status

Signed By  
On behalf of Supplier

Name:  
MUHAMMAD FARIS KHAN MUHAMMAD DILAWAR KHAN

Designation:  
Chief Operating Officer

Verified as per ICV Agreed Upon Procedures (AUP)  
On behalf of Certification Body

Name:  
Muhammad Aaliyan Ibrahim

Designation:  
Approver  
Electronically signed by  
Muhammad Aaliyan Ibrahim

Company:  
Assist Plus Accounting and Auditing Services

Certificate Issued Based on ICV Version: 3.0



## TEST REPORT ON HEAT RESISTANCE

Contractor	Leak Lock Insulation Contracting L.L.C		
Sample Description	Roof Cladding	Lab Report No.	WD-R-250709-1173
Source	Leak Lock Insulation Contracting L.L.C	Request No.	WD-Q-250709-0196
Client Reference	For All Leak Lock Insulation Contracting Customers	Sample No.	WD-S-250709-2245
Test Method	ASTM D2485-22 / IHP	Wimpey Ref no	250709005
Test Temperature	120°C	Date Received	09/07/2025
Test Duration	24 Hours	Date Tested	14/07/2025-15/07/2025
Relative Humidity	50%	Date Reported	16/07/2025
Room Temperature	23°C	Tested By	UM

## Procedure

- The Cured Panels were exposed to hot air oven for 24 Hours at 120°C.
- After completion of the test duration the specimen is removed from the furnace and cooled to room temperature.
- The Specimens Physical conditions were evaluated.

### Test Result

Test	Inference	Result
Temperature Resistance at 120°C	No cracking or delamination observed on the test sample.	Pass
Dry Film Thickness	Min-Max (µm)	24.5 - 64.8
	Average (µm)	35.06
Observation	No failure or damages observed Visually	
Final Result	Satisfactory	

Remarks: None

Signed for and on behalf of Wimpey Laboratories LLC

**S.Sarath Kumar**  
**Laboratory Manager**

Test results relate only to the samples tested.  
This report shall not be reproduced except in full, without the written approval of the laboratory.  
- End of test -

Lab Report No: WD-R-250709-1173

Sample No: WD-8-250709-2245

## ANNEXURE - A

## PHOTOS

## BEFORE



## AFTER





## COOLTHERM # 6000

### General Description:

COOLTHERM 6000 is an elastomeric insulating coat based on high grade acrylic resin and fillers to provide a thermal insulation to a wall surfaces and roof. It is formulated to protect the substrate from efflorescence and aggressive agent present in the environment and serve as a waterproofing. When applied directly to rust will convert iron oxide to iron sulphate, thus preventing further rusting problems.

### Advantages:

- Non-toxic
- Good adhesion properties.
- Repels water vapour and humidity.
- Allows the release of any moisture coming up from the ground by capillary action.
- Protect the formation of fungus and algae.
- Anti condensation and high thermal insulation property that reduce up to 40%.
- Inherent flexibility to accommodate hairline cracks in the substrate.
- High build maintenance finishes
- Ease of application.

### Characteristics and Physical Properties:

Colour	White & Pigmented
Gloss	Eggshell
Specific weight	1.000 +/- 0.005 kg/L
Solid Content (%W)	60
Coverage	2 – 3 m <sup>2</sup> /L @ 200 microns
Touch dry	1 – 2 hrs.
Recoat	5 – 6 hrs.
Shelf life	12 months
Flash point	65°C
Dilution	Water
VOC	37 g/L
Application	By brush, roller and airless spray gun

### Surface Preparation:

#### New Substrates:

- Substrate must be free from any form of contaminants.
- Apply 1 coat of LOCK Masonry AR Primer as impregnating sealer for concrete.
- Apply 1 – 2 coats of COOLTHERM 6000.

#### Old Concrete (previously painted)

- Remove all blistered, cracked and peeled off paint from the surface.
- Penetrated paint must be cleared and treated with 3% ammonia and water.
- Glossy finish coat must be sanded.
- Apply 1 coat of LOCK Masonry AR Primer as impregnating sealer. Apply 1 – 2 coats of COOLTHERM 6000

### Metal

- Surface to be coated must be free from other contaminants (oil, grease and other foreign matters.)
- Apply LOCKTHERM 6000 at the rate of 200 micron to attain the required specifications.

### Method of Application:

Instruction for use	
Airless Spray	
Recommended Thinner	Sweet water
Volume of Thinner	Approx. 0 – 5%
Nozzle orifice	0.46 – 0.53 mm.
Roller	
Recommended Thinner	Sweet water
Volume of Thinner	Approx. 0 – 5%
Cleaning	Sweet water

### Typical Recommended System:

#### Concrete

LOCK Masonry AR Primer	1 coat
COOLTHERM 6000	1-2 coats

#### Metal

LOCK Aqua Metal Primer	1 coat
LOCKTHERM 6000	1-2 coats

### Storage:

The product must be stored in accordance with national regulations. The product should be kept in a cool and well-ventilated place, protected from heat and direct sunlight. Containers must be kept tightly closed.

### Cleaning of Tools:

All tools should be cleaned with water.

### Packing:

Available in 20 liter (Pail)

### Precautions:



See Safety Indication Sheet.

The above information is given to the best of our knowledge based on laboratory test and practical experience. However, as the paint is often used under condition beyond our control, we cannot guarantee anything but the quality of the paint itself. We reserve the right to change the given data without prior notice.

**LEAK LOCK INSULATION CONTRACTING LLC**  
DUBAI, U.A.E  
MOB: 0097152 4888950



# Technical Data

## NaturalLite Single skin



### TOLERANCES

In accordance to  
ASTM D3841

#### ✓ LENGTH

± 6mm for sheets less  
than 4.9m, 19±mm if  
sheets exceed 4.9m

#### ✓ THICKNESS

± 10%

#### ✓ SQUARENESS

Within 3.2 mm  
of square

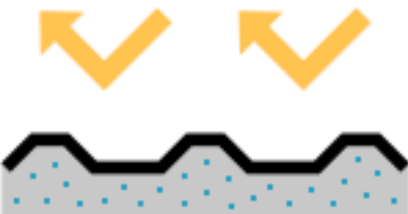
#### ✓ WEIGHT

± 10%

### PHYSICAL PROPERTIES

PROPERTY	VALUE	UNIT	STANDARD
Thickness	1-3	mm	ASTM D3841
Tensile strength	102.7	MPa	ASTM D638-14
Flexural strength	216	MPa	ASTM D790-14
Flexural modulus	7.6	GPa	ASTM D790-14
Barcol hardness	40-50	Barcol	ASTM D2583-13
Glass content	23	%	ASTM D1371-11
Service Temperature	-20 to 80	Degrees Celsius	ASTM D1371-11
Fragility	Non fragile Class B	-	ACR[M]001
U-Value	5.5 W/m²K	-	ASTM C518

### OPTICAL PROPERTIES



#### SHEET THICKNESS

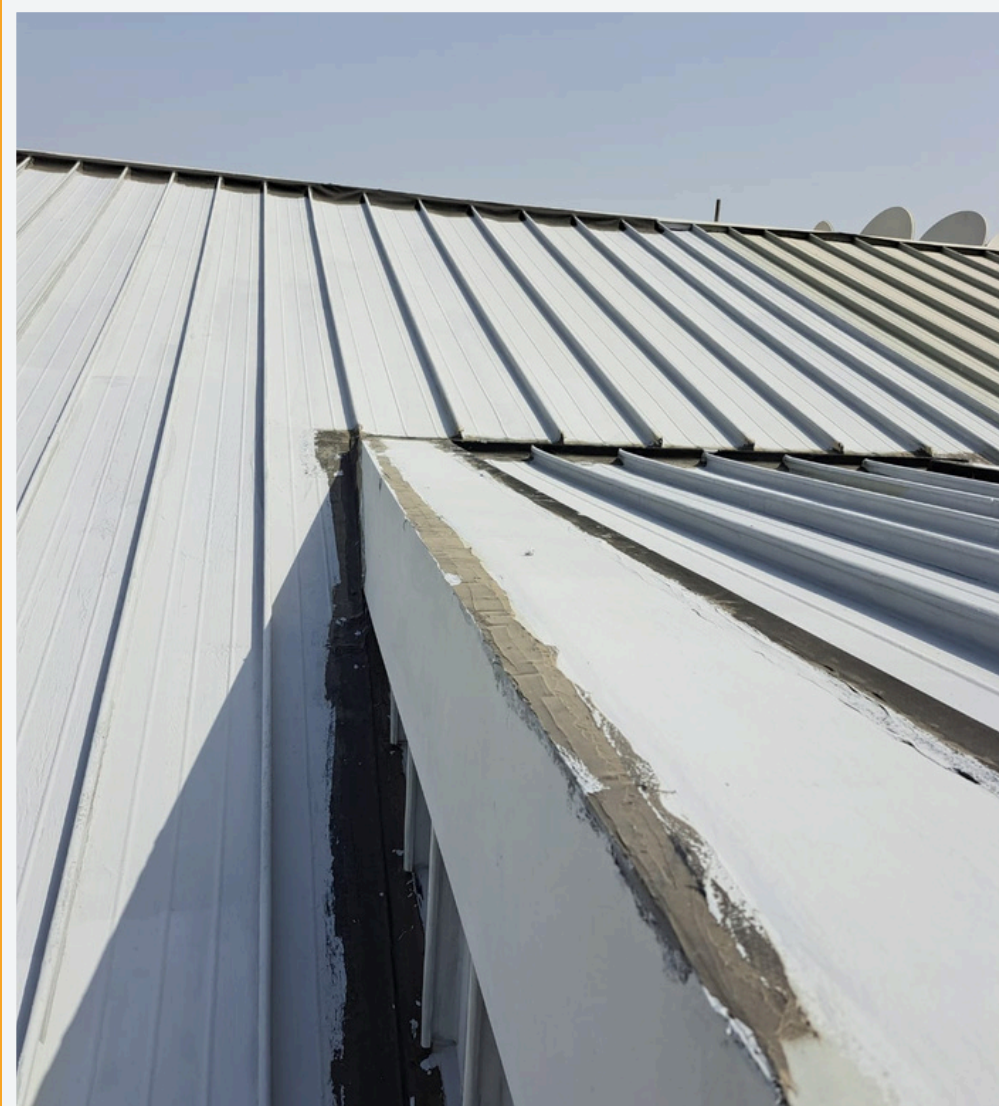
#### LIGHT TRANSMISSION

1.0 mm	80-85 %
1.3 mm	75-80 %
1.5 mm	70-75 %
2.0 mm	65-70 %
3.0 mm	60-65 %

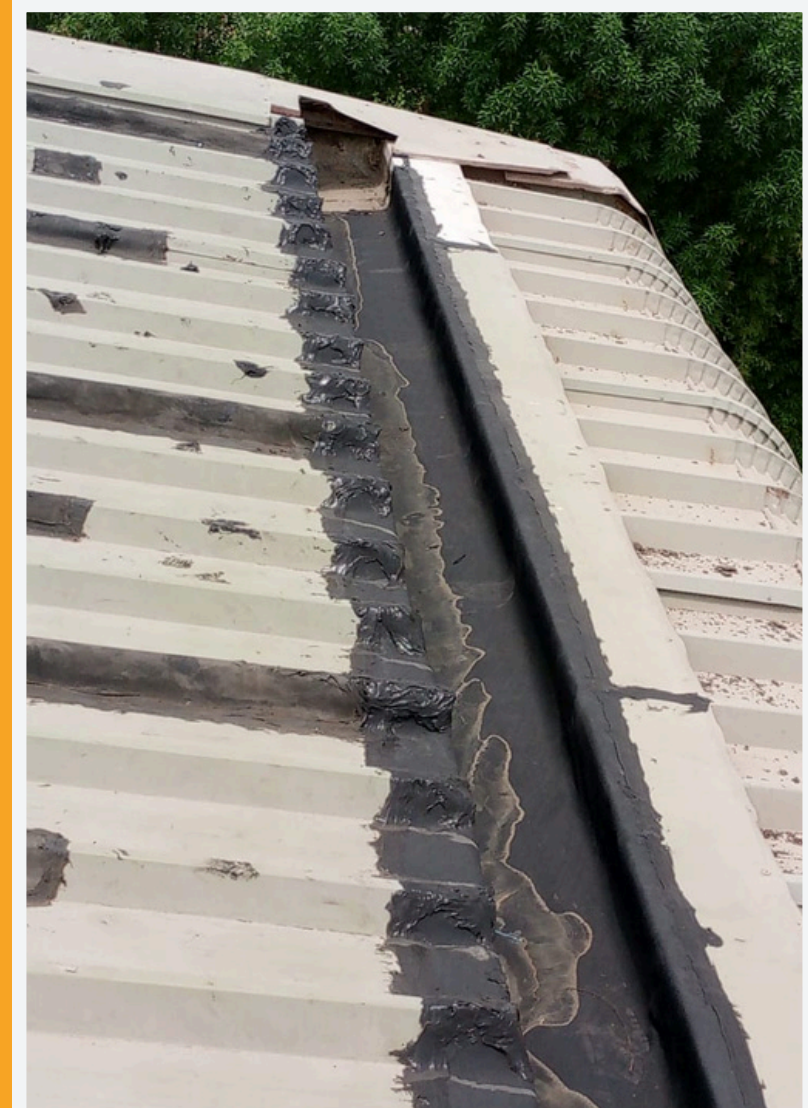
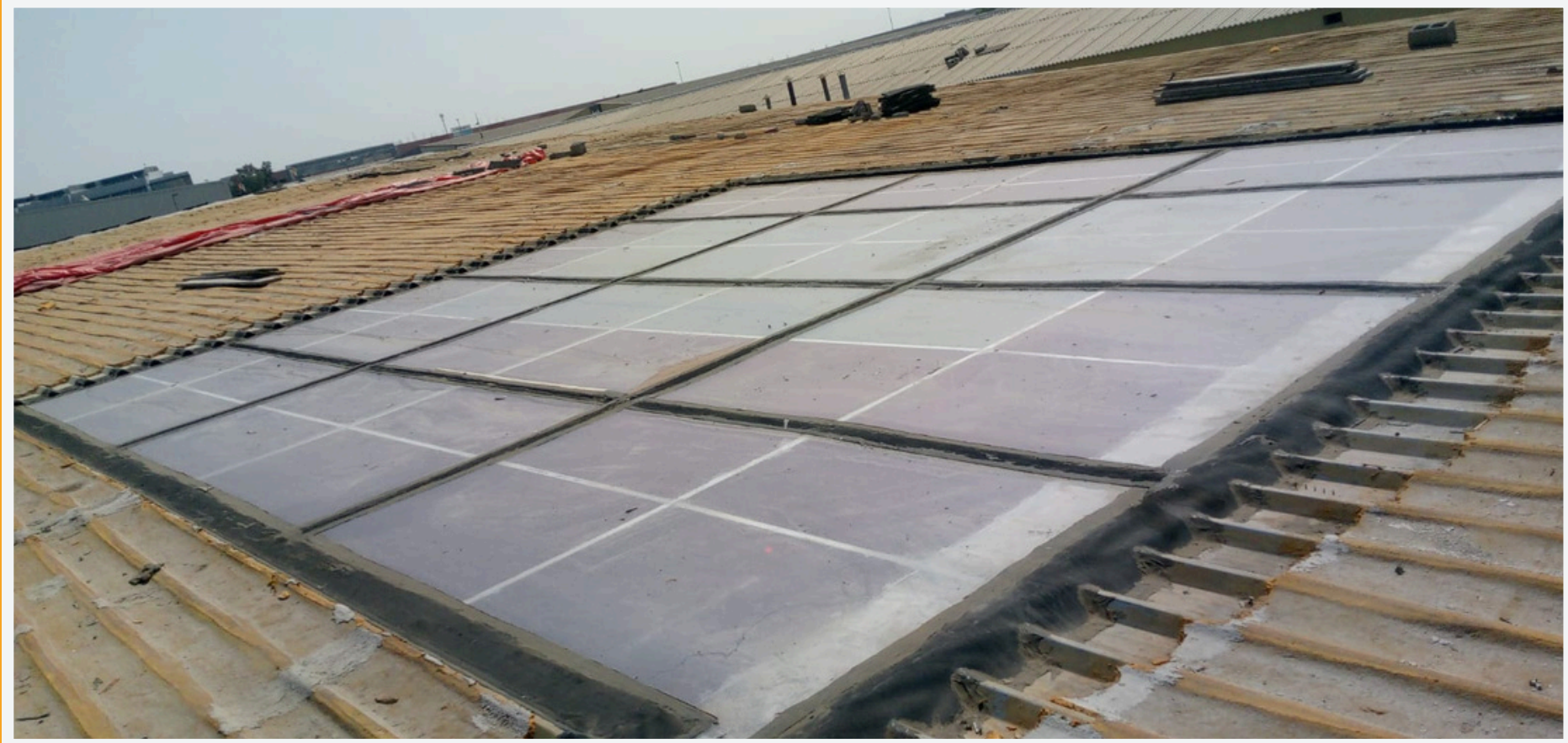
• CUSTOMIZED COLORS  
CAN BE FORMULATED TO  
ACHIEVE A WIDE RANGE  
OF OPTICAL PROPERTIES.



# Gallery



# Gallery



# Gallery



الخزنة للجلود  
AL KHAZNAH LEATHERS



مدرسة البحث العلمي  
SCHOOL OF RESEARCH SCIENCE



# Clients



HANSA ENERGY

Taaza®  
Ever Fresh



EVERSENDI  
Towering – Powering – Energising – Innovating

# Clients



# Clients





**+971 52 967 6127**  
**+971 52 488 8950**



**<https://leaklockuae.com/>**



**[info@leaklockuae.com](mailto:info@leaklockuae.com)**



**OFFICE F31, COMMERCIAL-5 BUILDING PLOT  
NO. 176-0 - SAIH SHUAIB 2 - DUBAI  
INDUSTRIAL CITY - DUBAI - UNITED ARAB  
EMIRATES**